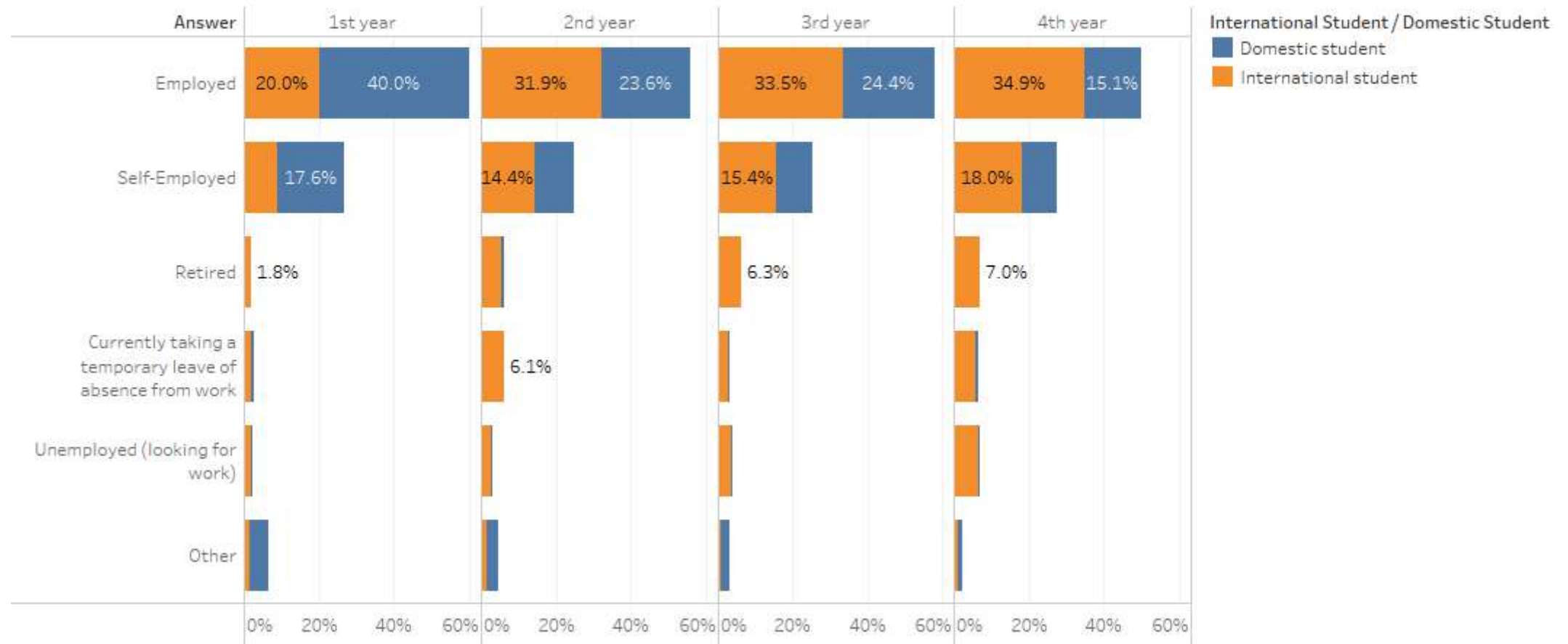


Student Survey - (Economic Impact -
International Student Responses/Domestic
Student Responses/Breakdown by Year)

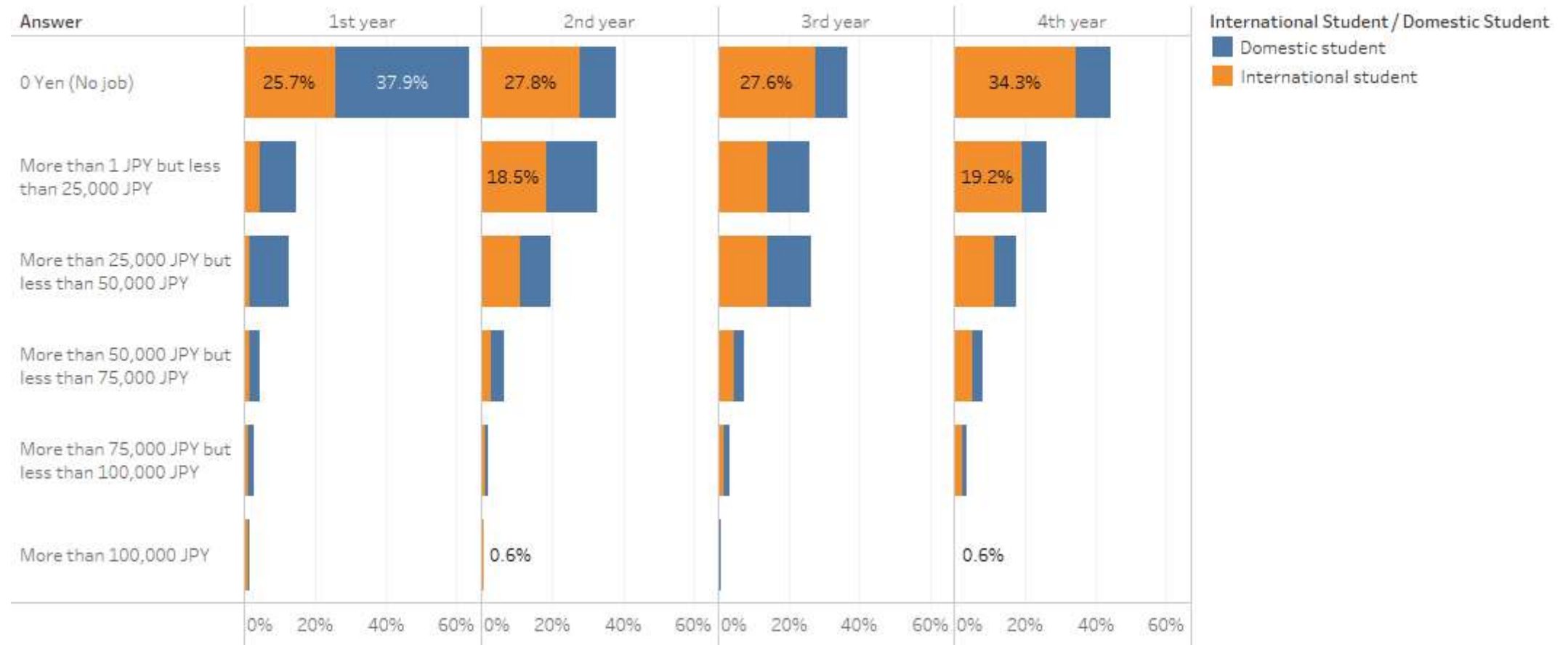
Q1. How has the COVID-19 pandemic affected your income and your parents' or guardians' income?



Q2. What is your parents' (or the person who financially supports your household) current employment situation?



Q4. Compare your post pandemic part-time job income and select the appropriate answer. *Average monthly income from April 2020~September 2020



Q5. Compare the pre pandemic financial support you receive monthly from your parents or other individuals who financially support you and select the appropriate answer. *Average monthly financial support amount from April 2019~March 2020 (pre-pandemic) *Calculate the financial support you receive for rent, living fees, etc. Do not include the financial support you receive for APU tuition payments. *Select 0 yen if you are not receiving financial support from your parents or others.



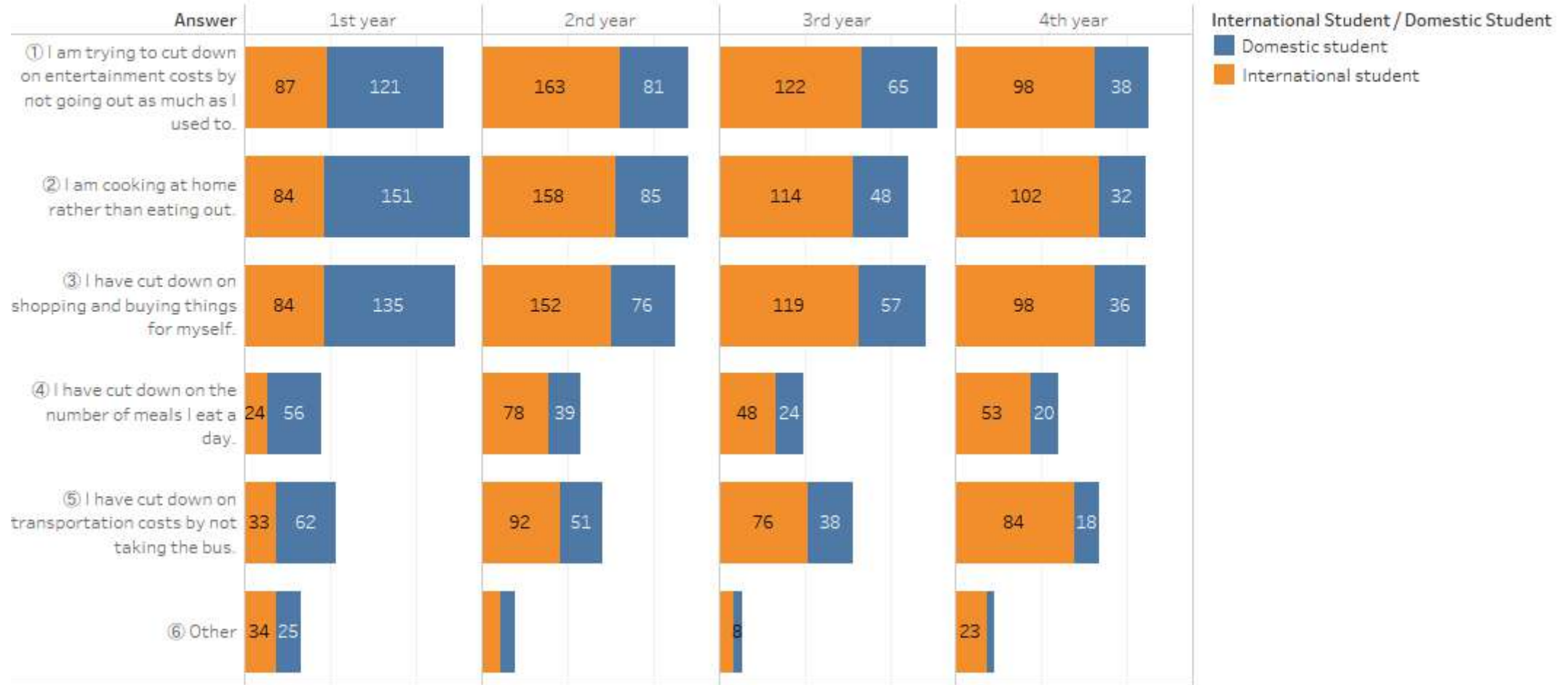
Q6. Compare the post pandemic financial support you receive monthly from your parents or other individuals who financially support you and select the appropriate answer. *Average monthly financial support amount from April 2020~September 2020 *Calculate the financial support you receive for rent, living fees, etc. Do not include the financial support you receive for APU tuition payments. *Select 0 yen if you are not receiving financial support from your parents or others.



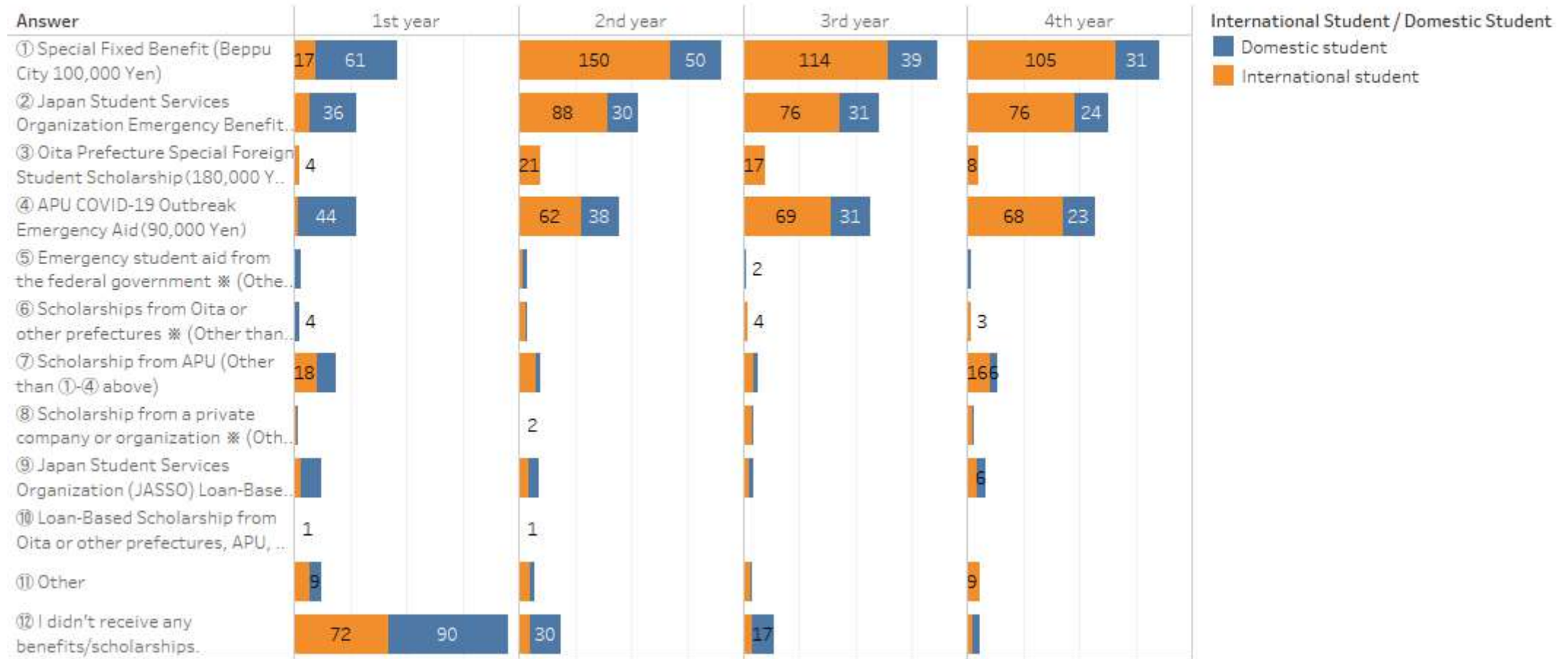
Q7. Do you have a part-time job?



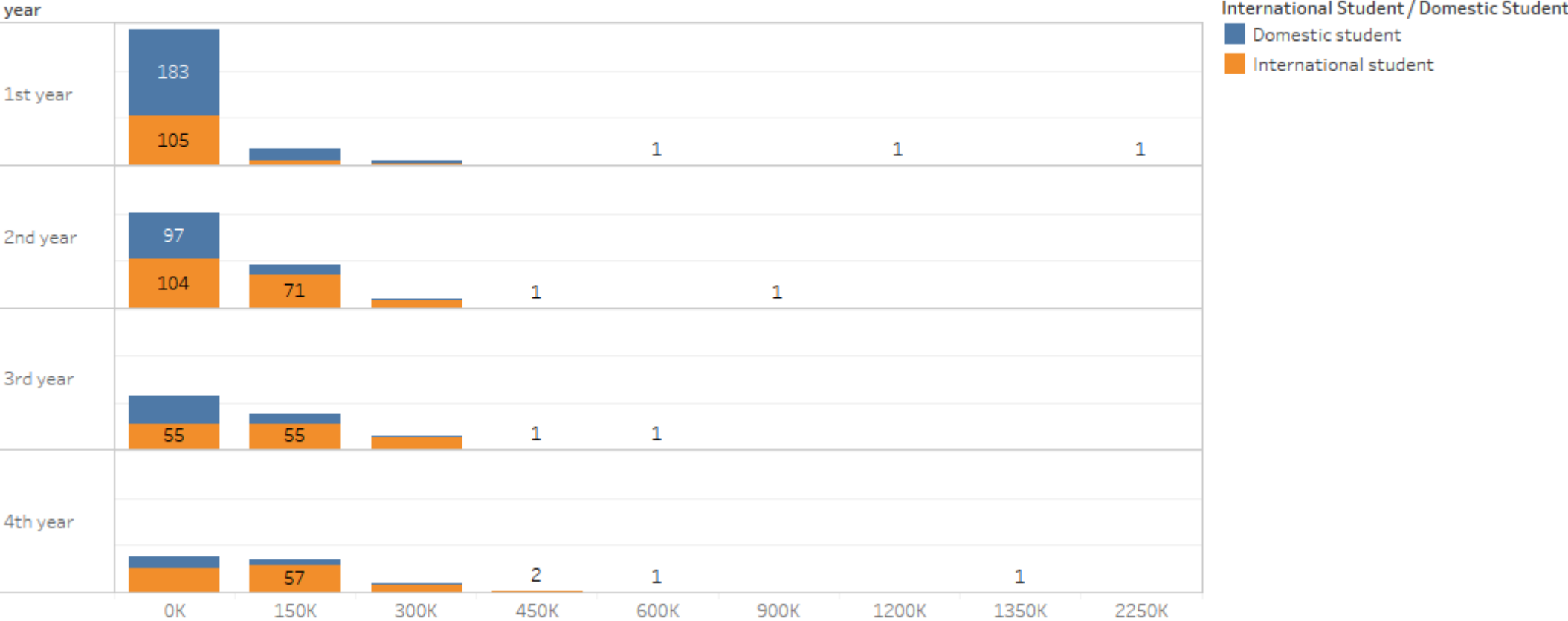
Q8. How are you attempting to improve your financial situation?



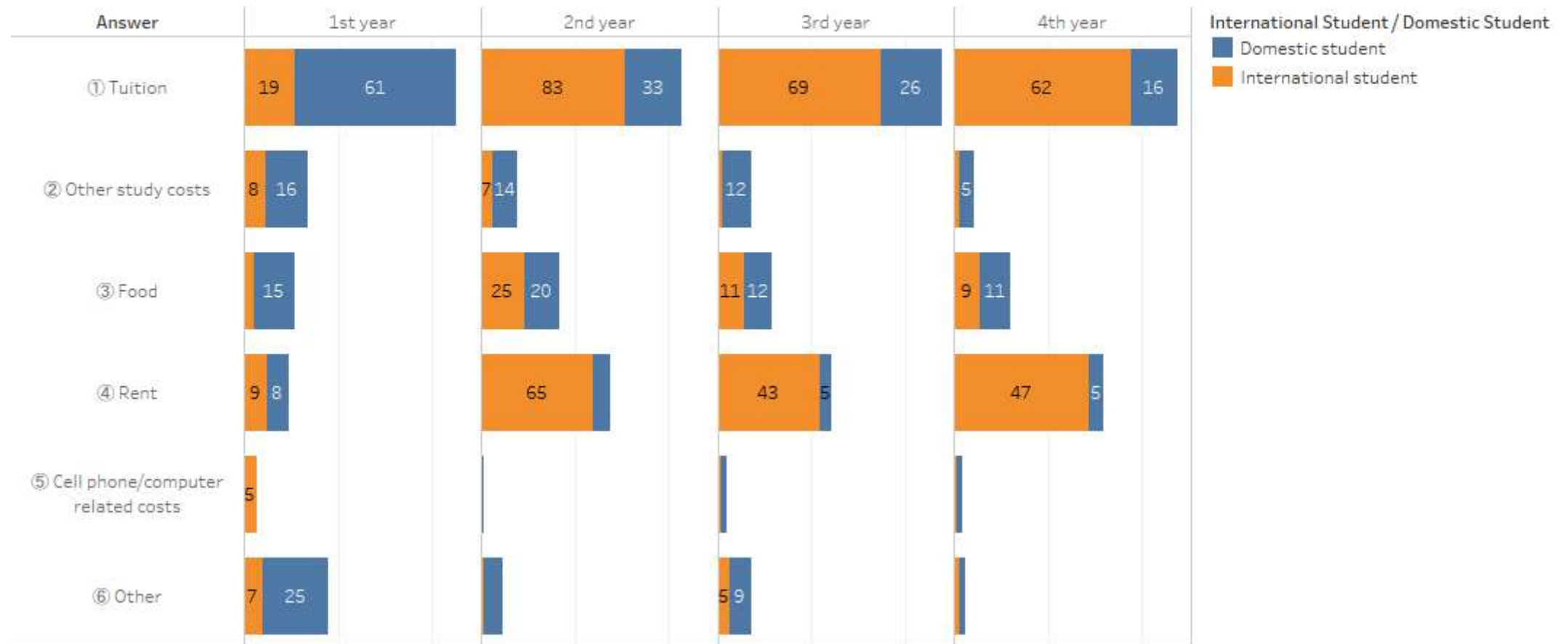
Q9. Select what you received in COVID-19 related benefits such as Special Fixed Benefit payments and other scholarships to help offset the financial effects of the coronavirus pandemic.



Q10. Calculate the total amount you received in COVID-19 related benefits such as Special Fixed Benefit payments and other scholarships to help offset the financial effects of the coronavirus pandemic(Yen).



Q11. Please answer this question if you received one or more forms of support outlined in Q9: What did you mainly use the financial support for?



Q12. Please answer this question if you received one or more forms of support outlined in Q9: Was the financial aid you received helpful in covering some of your student life related expenses?

