



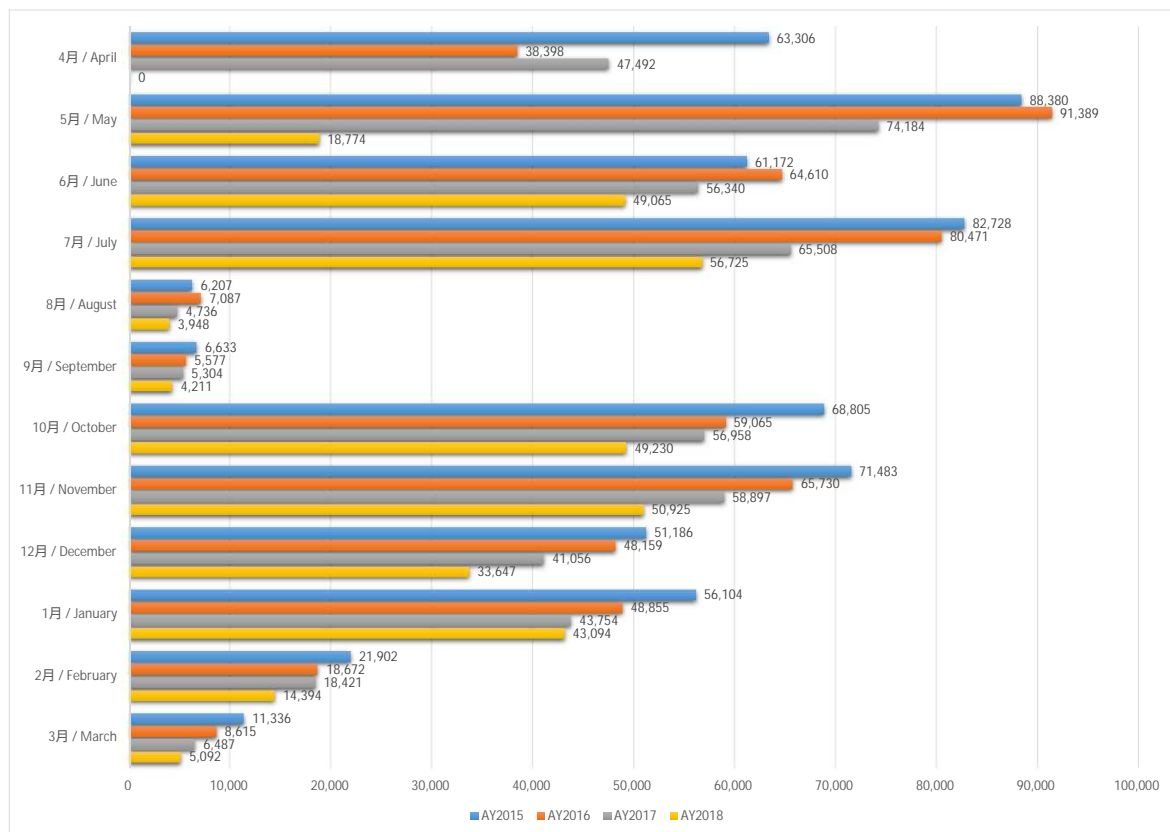
AY2018

ANNUAL REPORT
アニュアルレポート

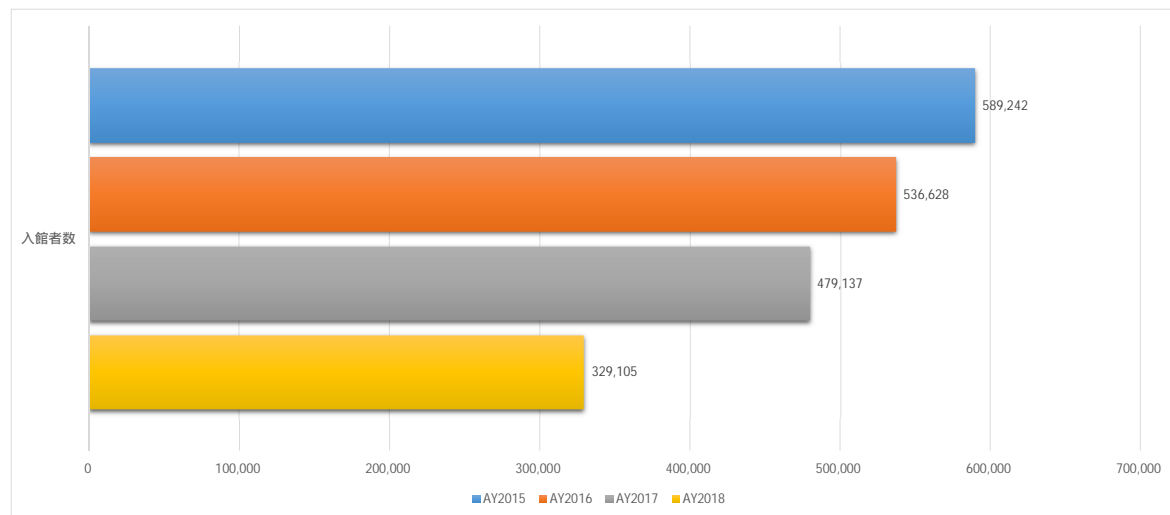
PUBLICATION DATE : NOVEMBER 2019

発行日：2019年11月

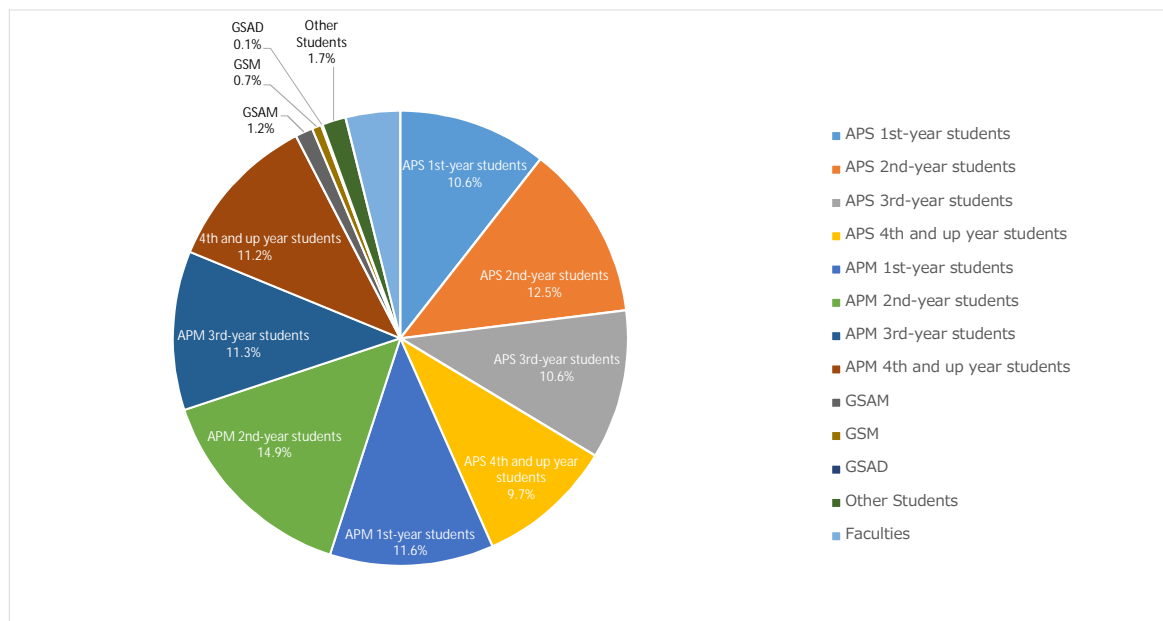
(1) 月別入館者数 (延べ数) / Monthly Total Number of Library Visit



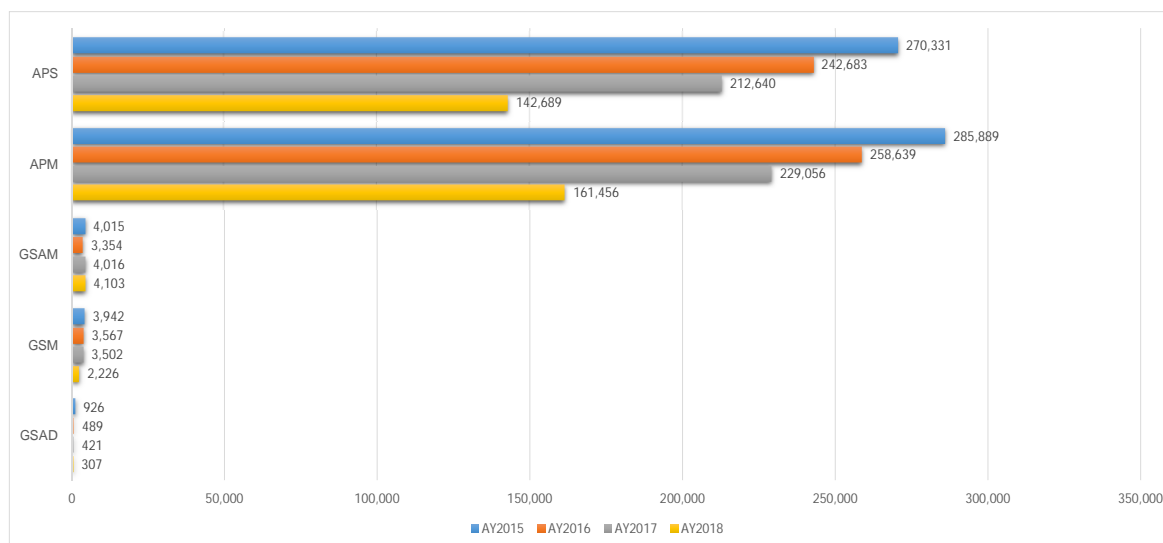
(2) 年間入館者数 (延べ数) / Total Number of Library Visits



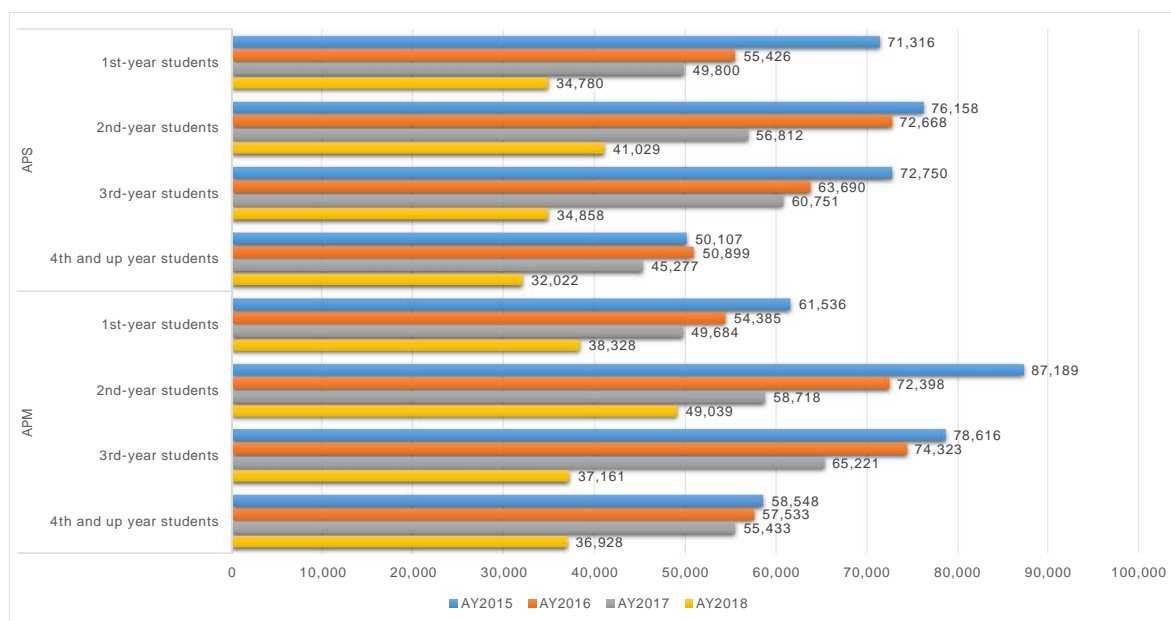
(3) 入館者割合 / Ratio of Library Visitors (by college and year level)



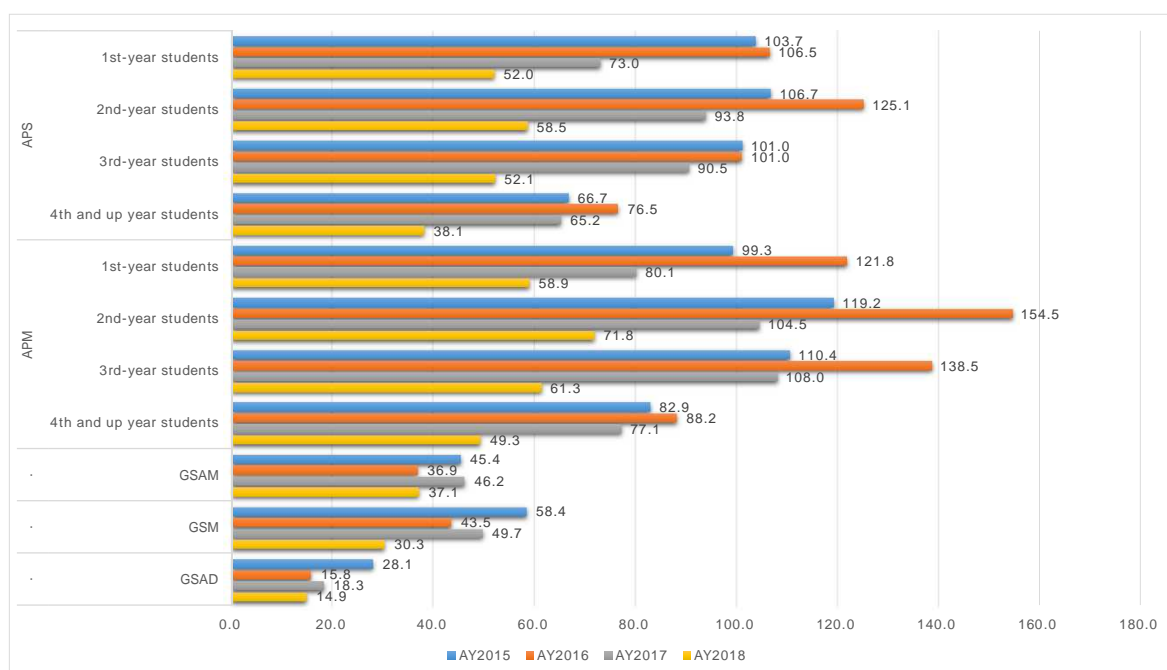
(4) 学部生・院生(正規生) 学部別入館者数(延べ数) / Cumulative Total Number of Library Visitors by College /Program



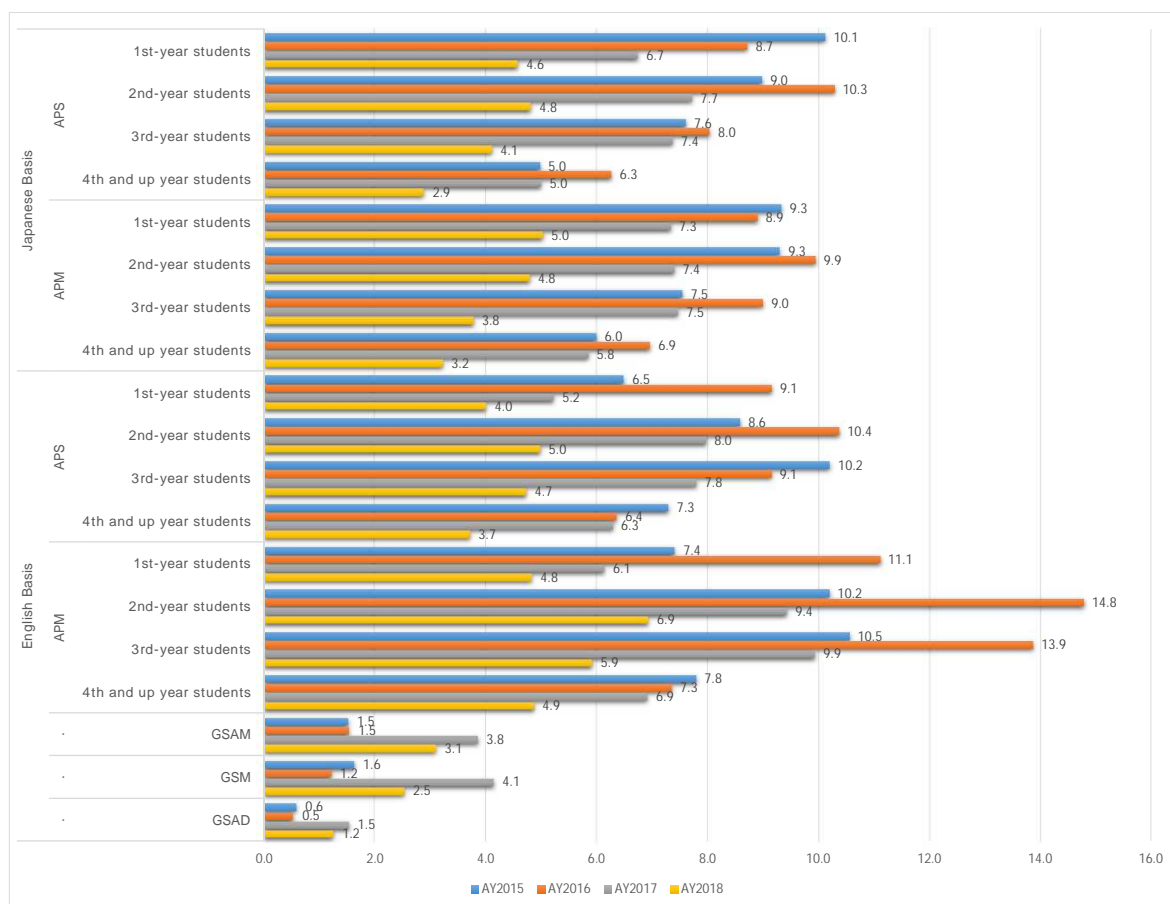
(5) 学部生(正規生) 学部・回生別入館者数(延べ数) / Cumulative Total Number of Library Visitors who are Undergraduate Students by College and Year Level



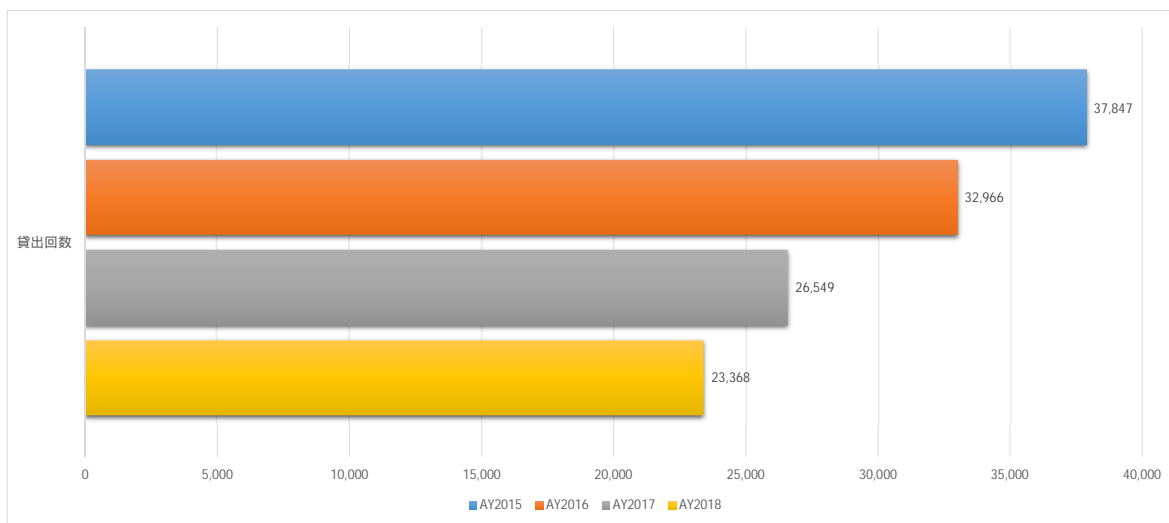
(6) 学部生・院生 学部・回生別1人当たり年間平均入館回数 / Average Number of Visits per 1 Student by College /Program and Year level



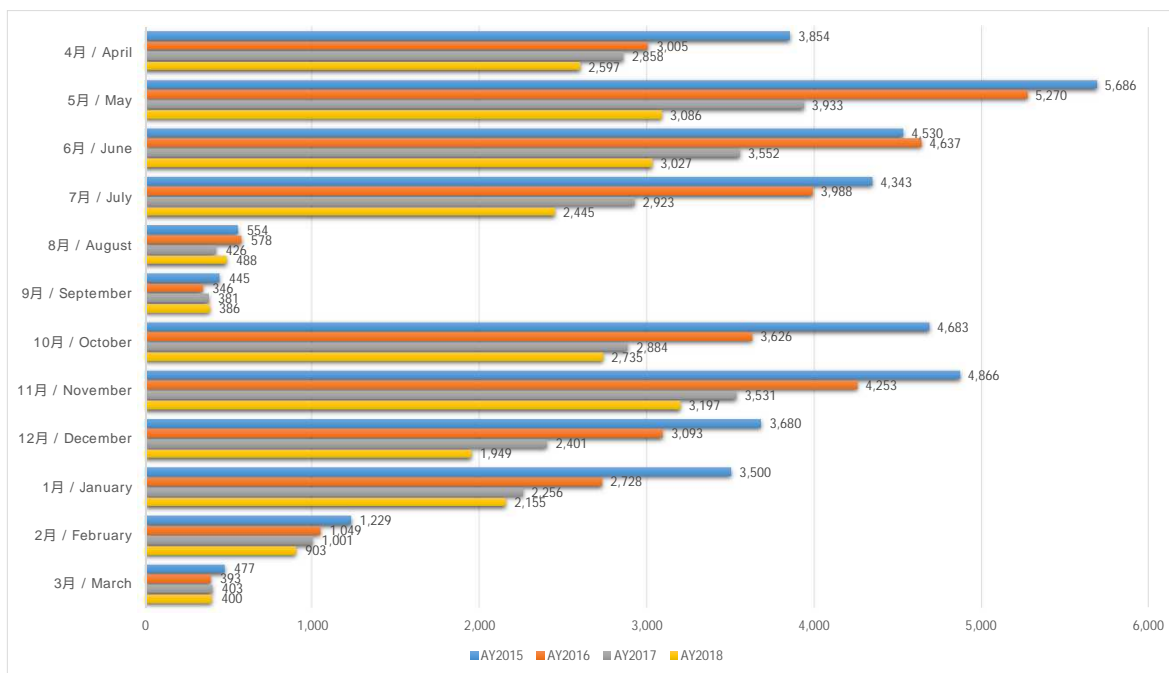
(7) 学部生・院生 言語基準・学部別 1ヶ月平均入館回数/ /Monthly Average Number of Visits per 1 Student by Language Basis, College/Program, and Year Level



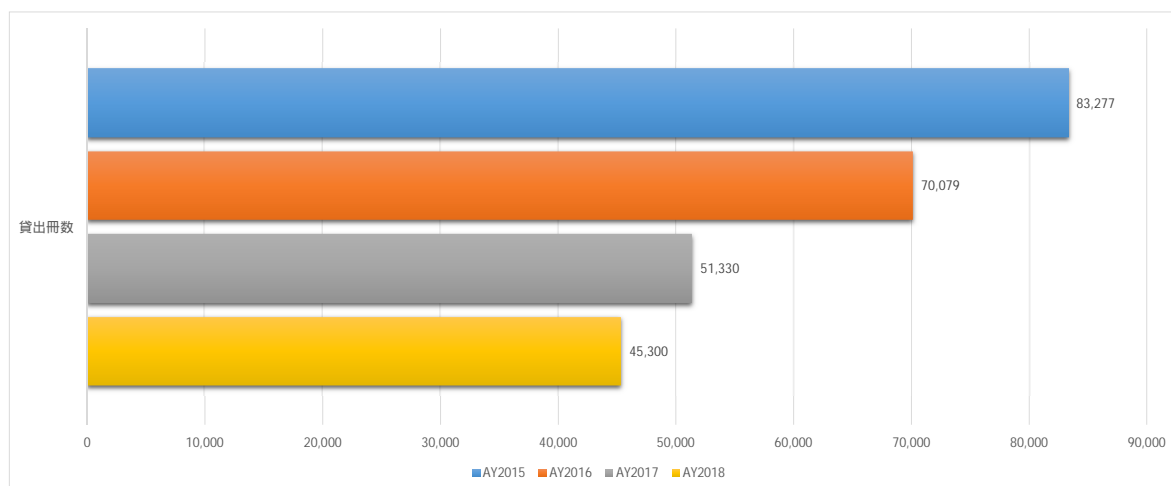
(8) 学部生・院生 年間貸出利用回数/ Total Number of Times Students Used Book Loan Services



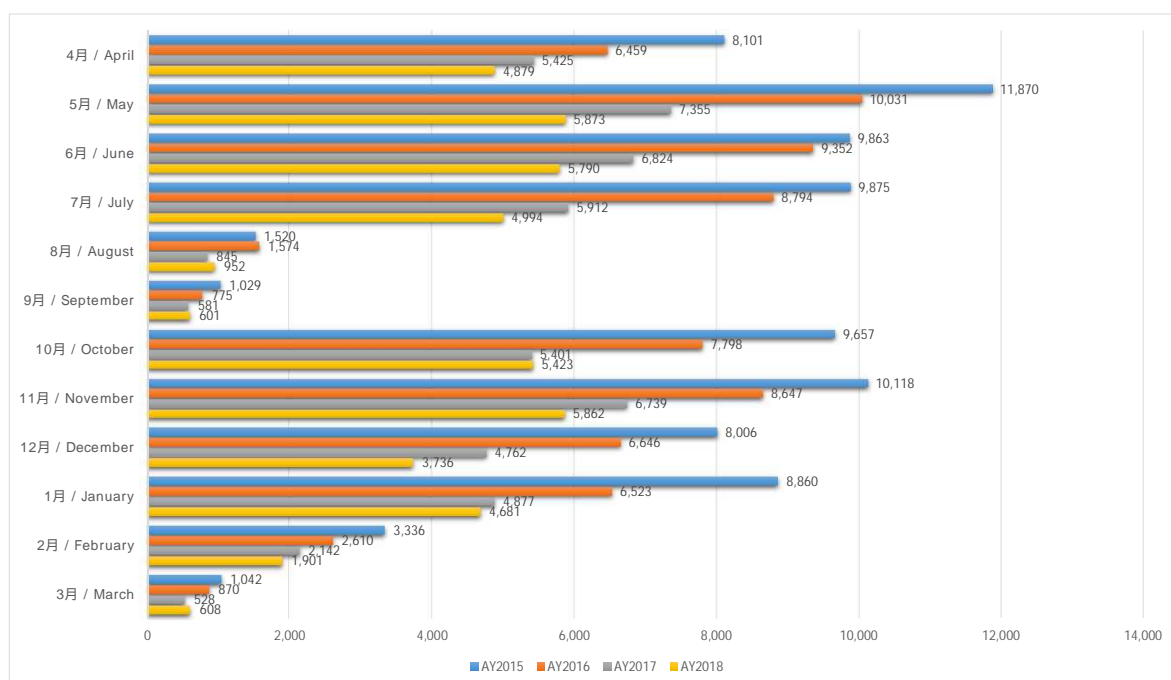
(9) 学部生・院生 月別貸出利用回数/ Number of Times Students used Book Loan Services by Month



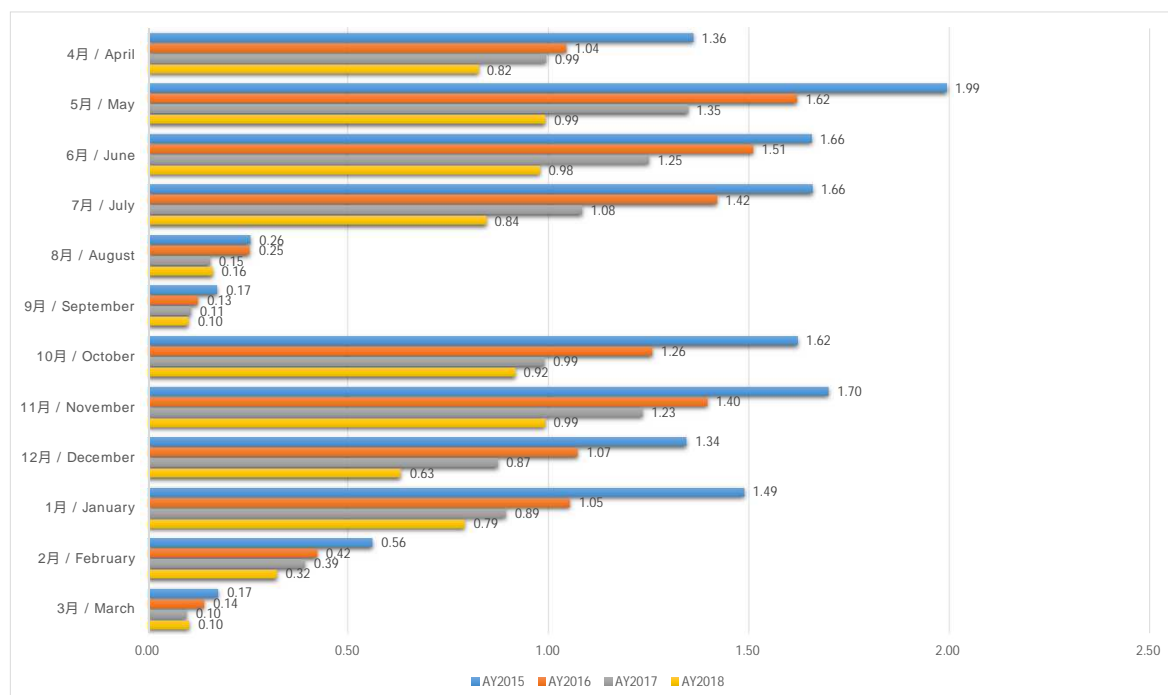
(10) 学部生・院生 年間貸出冊数 / Total Annual Number of Books Lent to Students



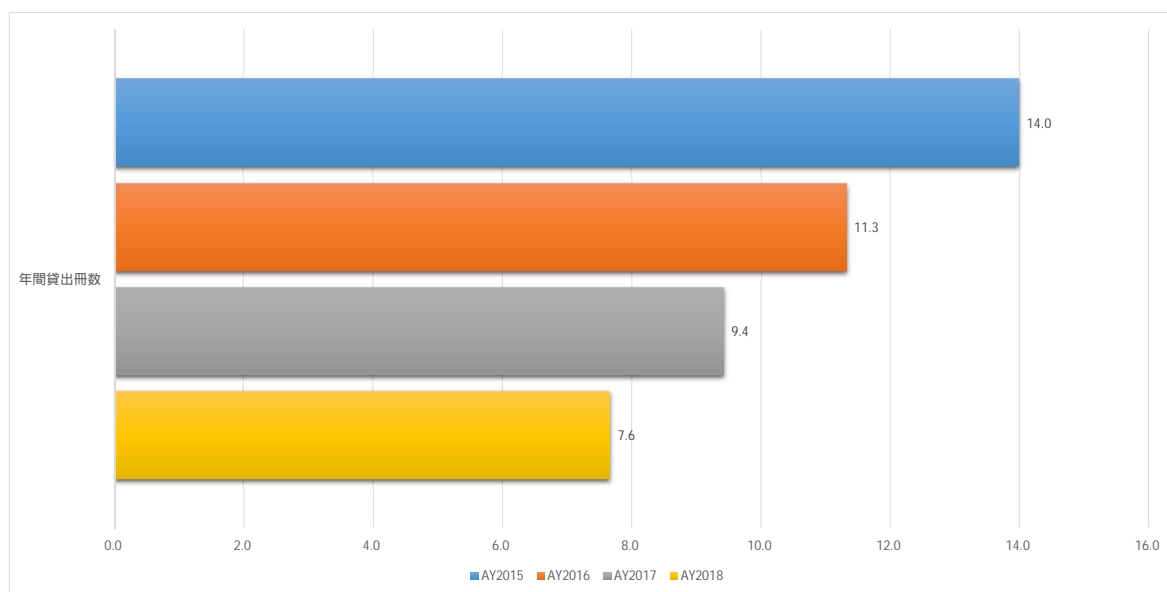
(11) 学部生・院生 月別貸出冊数 (延べ数) / Total Monthly Number of Books Lent to Students by Month



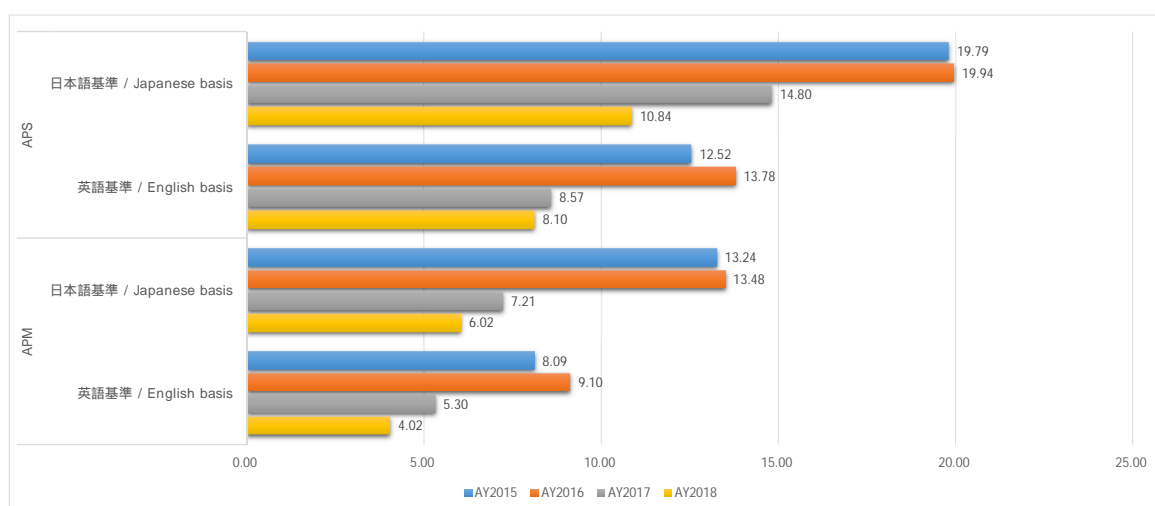
(12) 学部生・院生 1人当たり平均貸出冊数(月) / Monthly Average Number of Books Lent Per Student (By Month)



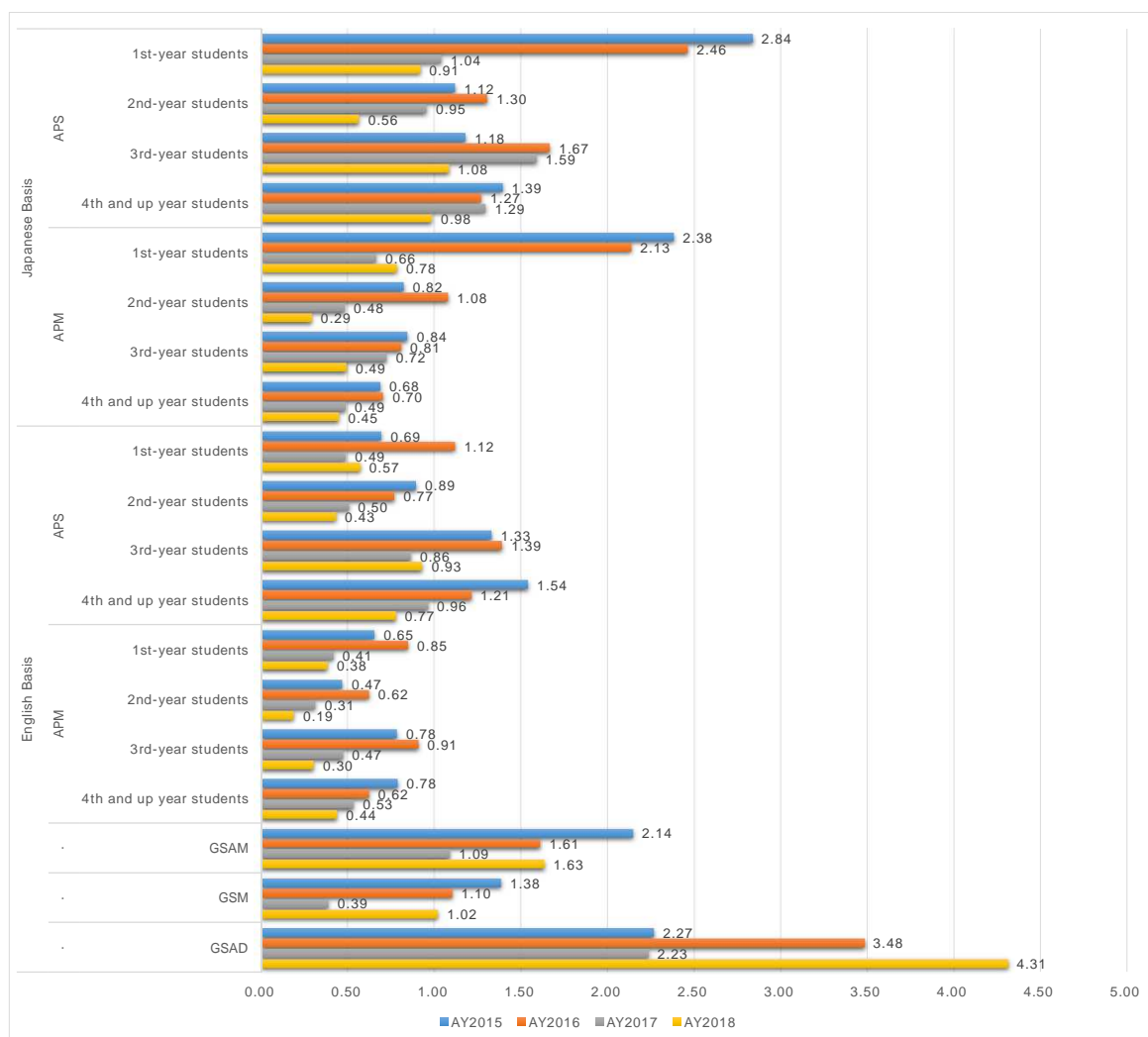
(13) 学部生・院生 1人当たり平均貸出冊数(年) / Annual Average Number of Books Lent Per Student



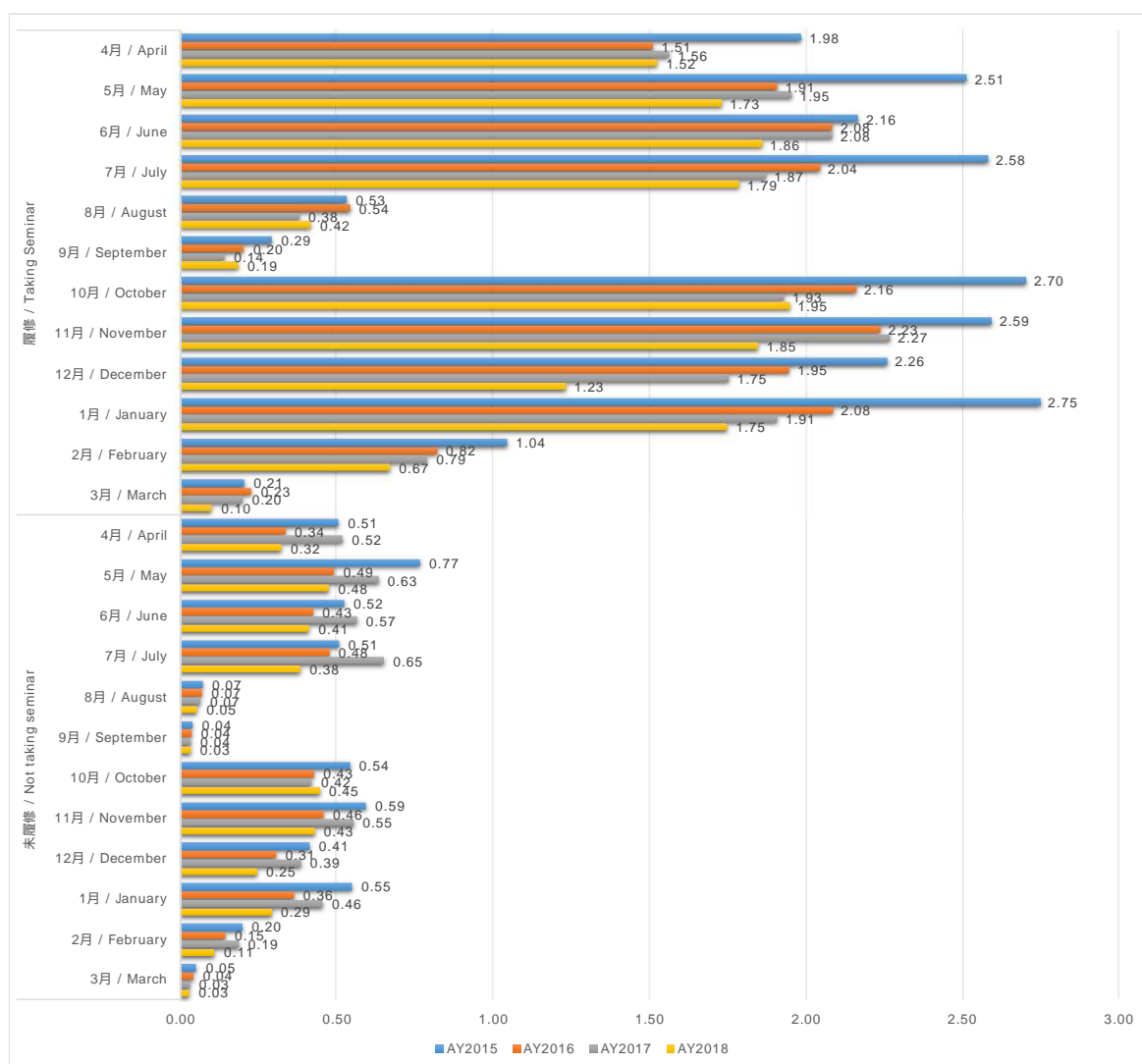
(14) 学部生 言語基準・学部別年間平均貸出冊数 / Annual Average Number of Books Lent Per Student by College and Language Basis



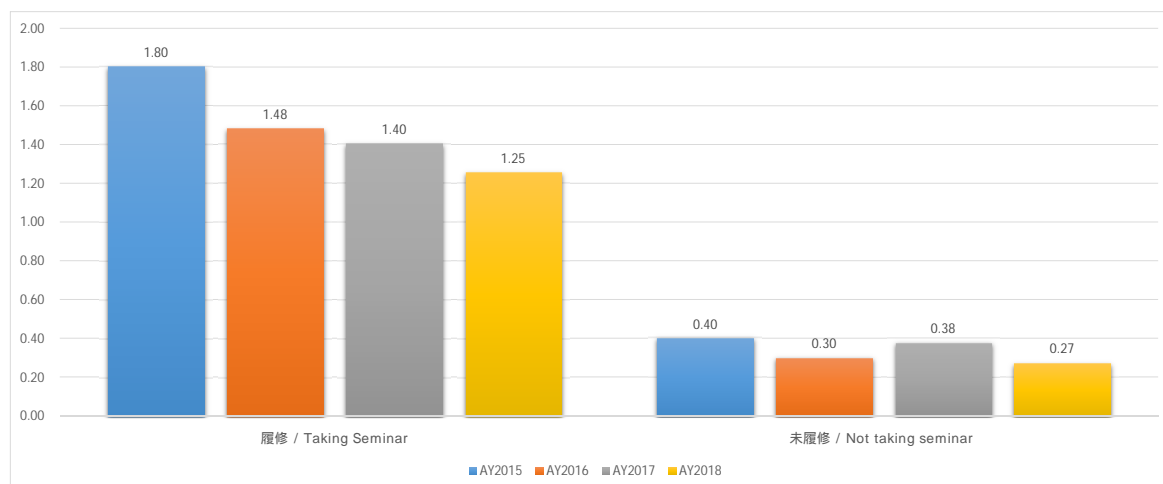
(15) 学部生・院生 言語基準・学部別 1ヶ月平均貸出冊数/ Monthly Average Number of Books Lent Per Student by Language Basis, College/Program, and Year Level



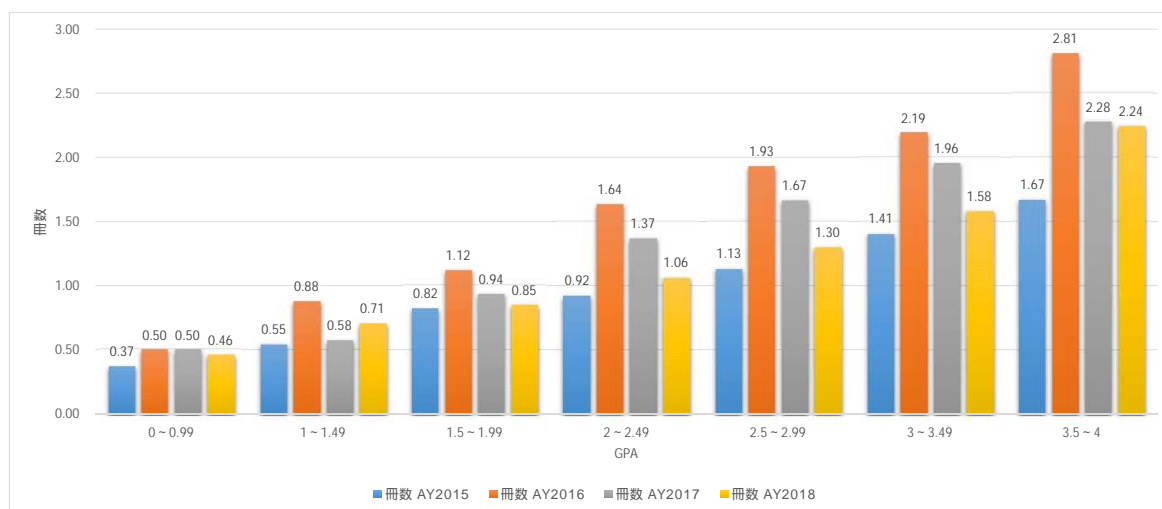
(16) 学部生 3回生以上ゼミ履修者・未履修者の月別貸出冊数比較 / Monthly Average Number of Books Lent Per Student (3rd year or higher)
According to Status of Seminar Registration



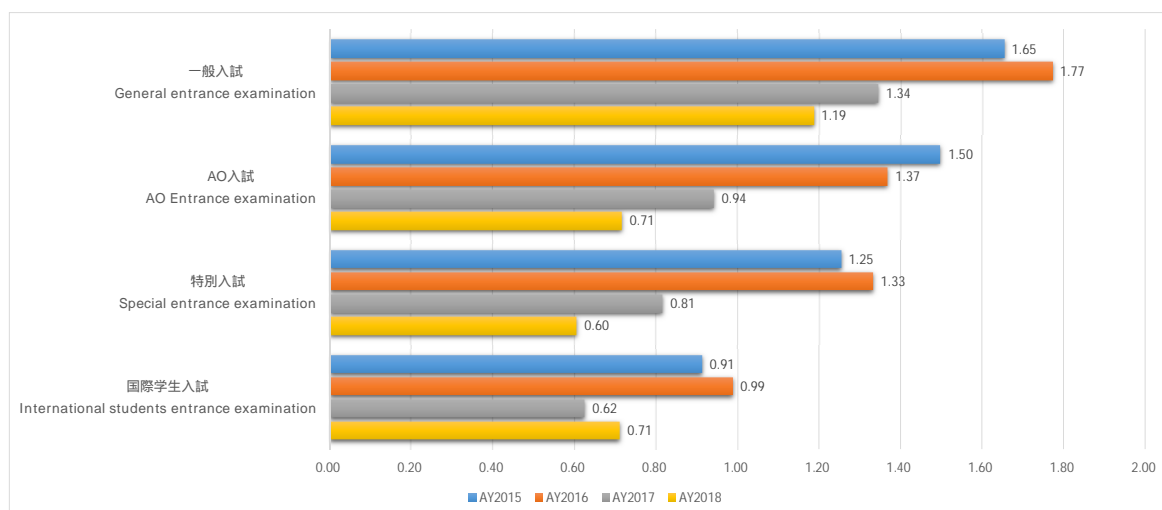
(17) 学部生 3回生以上ゼミ履修者・未履修者の月平均貸出冊数比較 / Monthly Average Number of Books Lent Per Student (3rd year or higher)
According to Status of Seminar Registration All students average circulation of 3rd year's and above taking seminar or not taking seminar



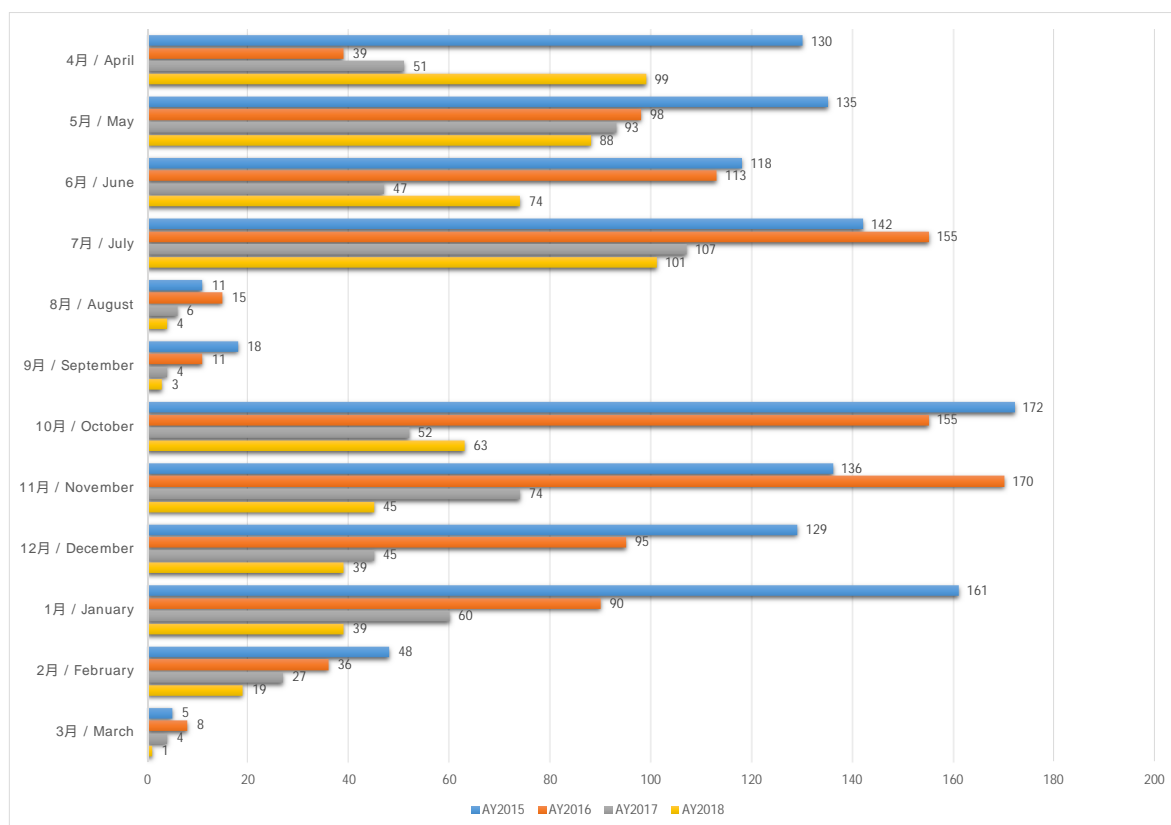
(18) 学部生・院生 成績（通算GPA）と月平均貸出冊数比較 / All students annual circulation by type of entrance examination



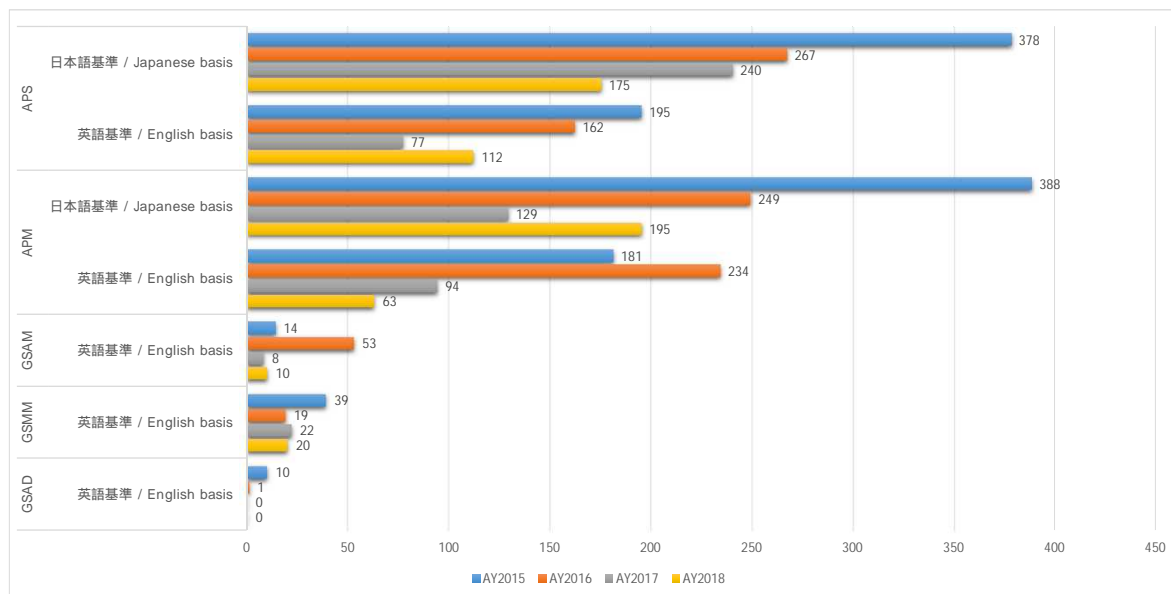
(19) 学部生・院生 入試手段別月平均貸出冊数 / All students annual circulation by type of entrance examination



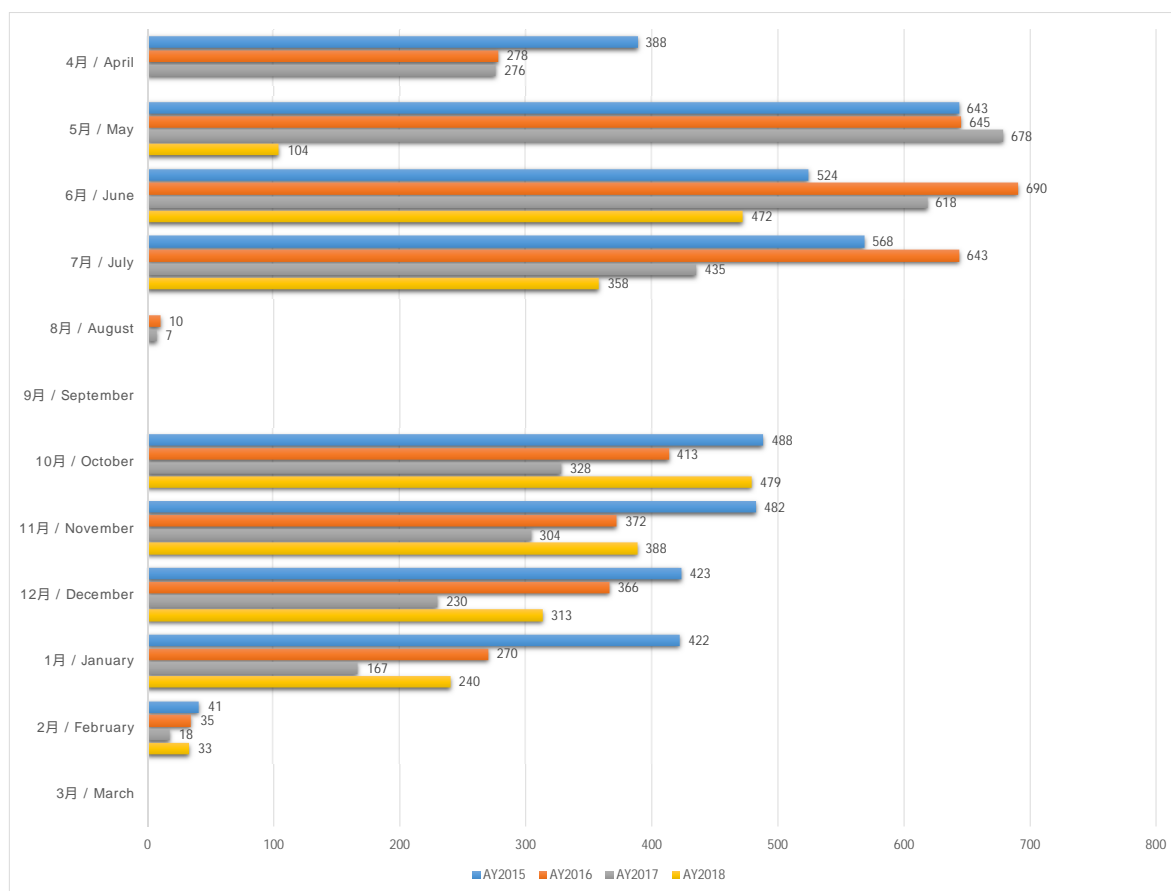
(20) 学部生・院生 リザーブ指定書籍の月別貸出冊数比較/ Total Monthly Number of "Reserved Corner Textbooks" by Month



(21) 学部生・院生 リザーブ指定書籍の年間貸出冊数比較/ Total Annual Number of "Reserved Corner Textbooks" Lent to students by College and Lang



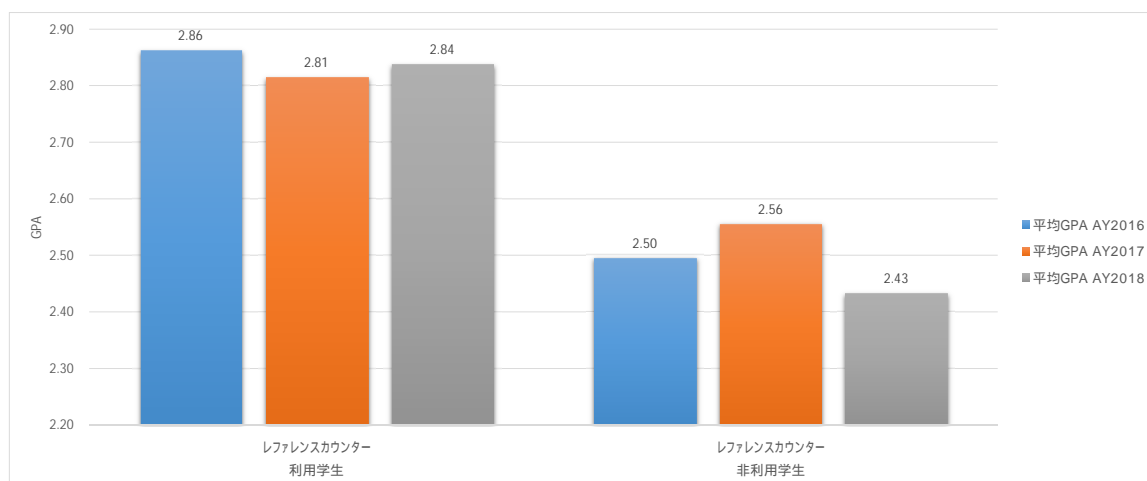
(22) 21時以降の入館者数/ Number of Library Visits after 21:00 by Month



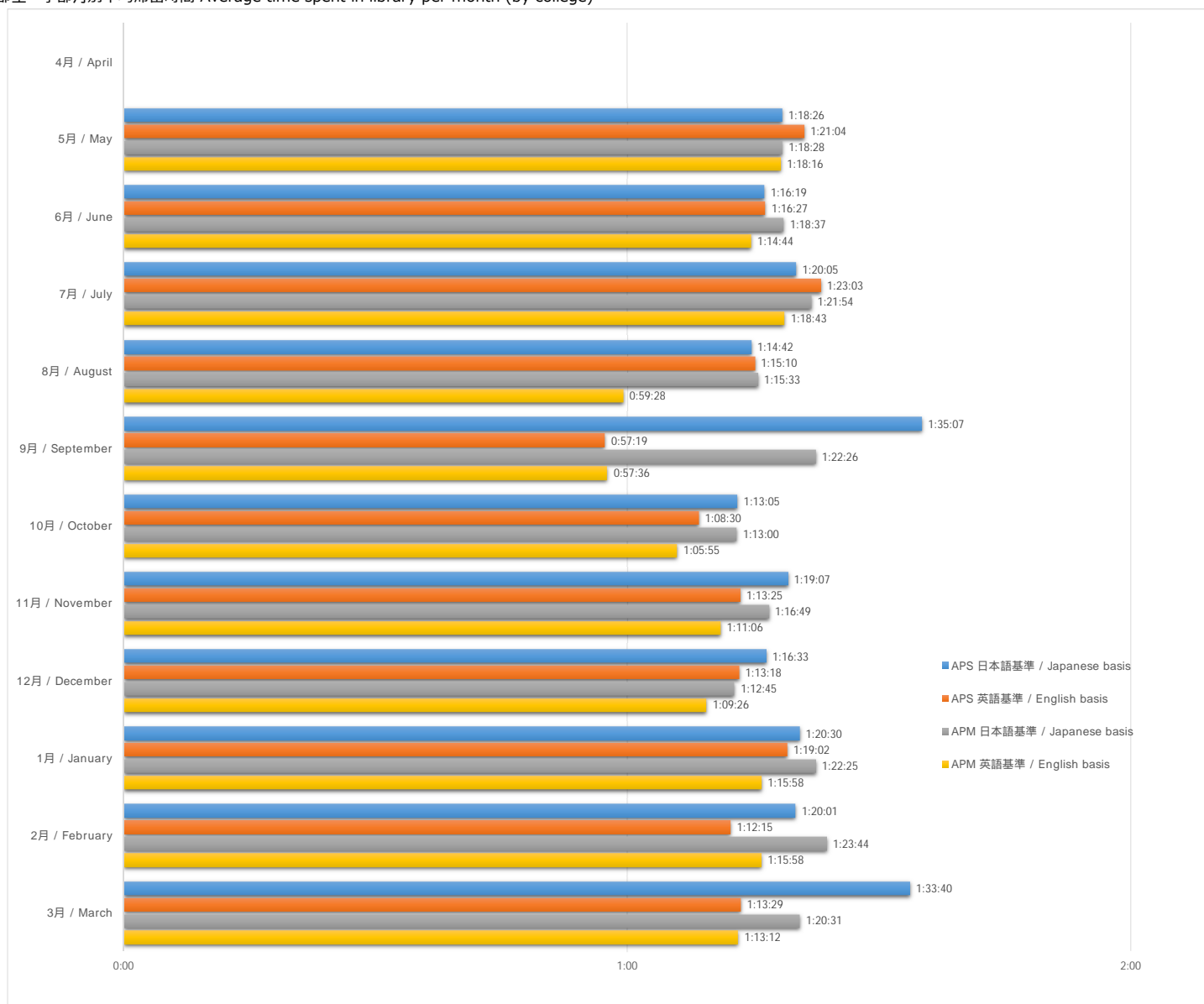
(23) 学部生・院生 成績 (通算GPA) と平均入館回数比較/ Average Number of Student Library Visits by GPA Range



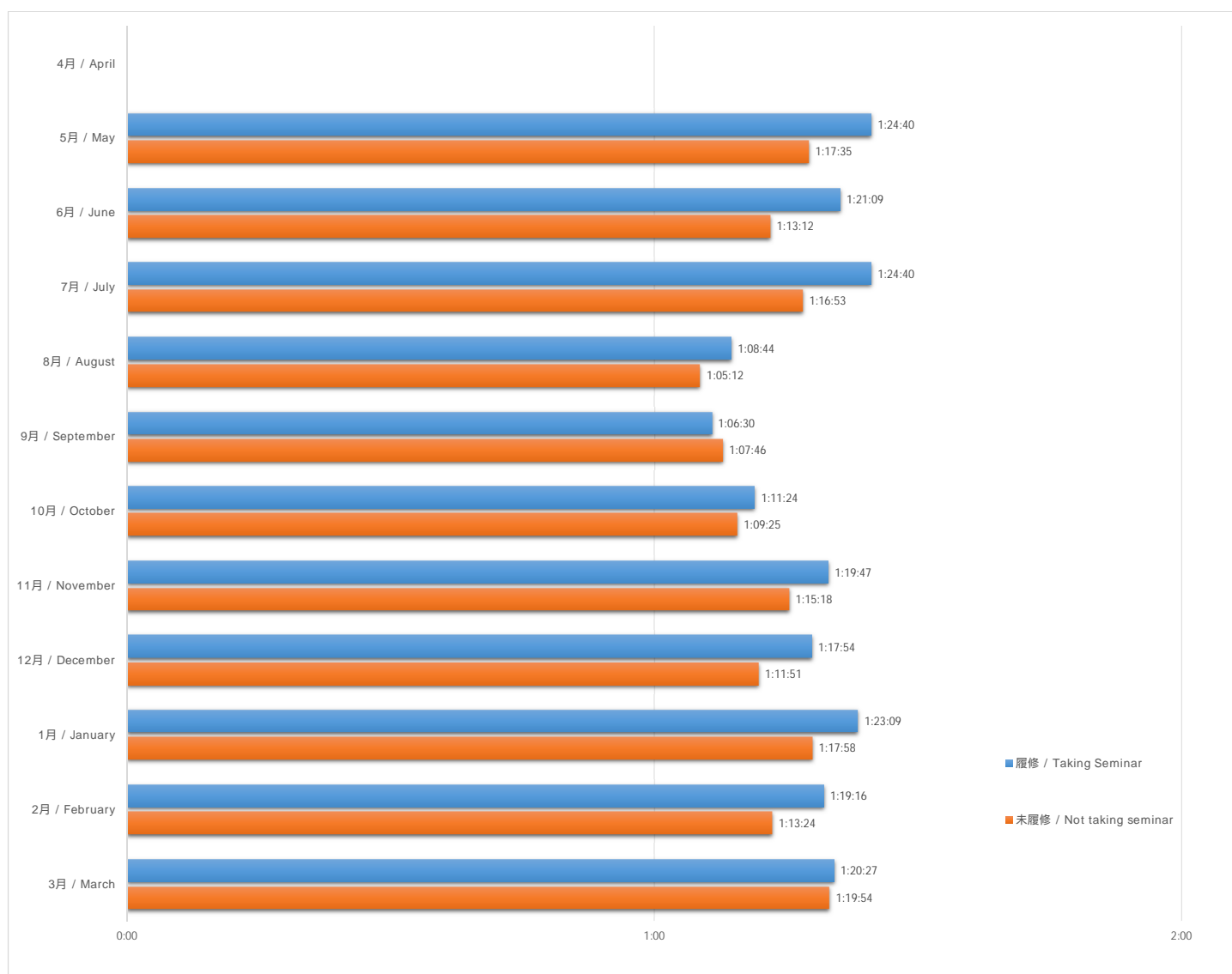
(24) 学部生・院生 レファレンスカウンター利用有無と成績（通算GPA）の比較/ Average GPA of Students by Status of Reference Counter Usage



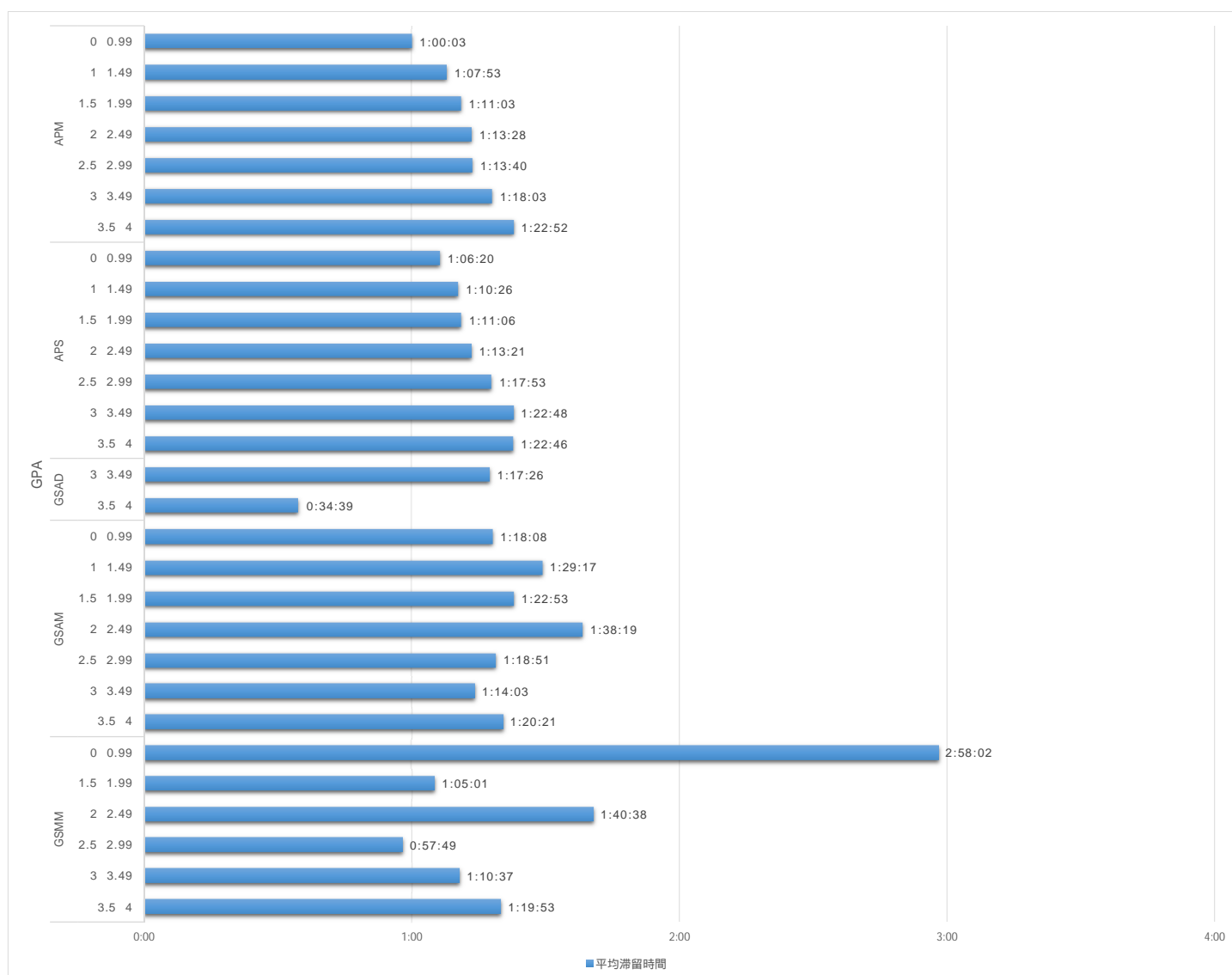
(25)学部生 学部月別平均滞留時間 Average time spent in library per month (by college)



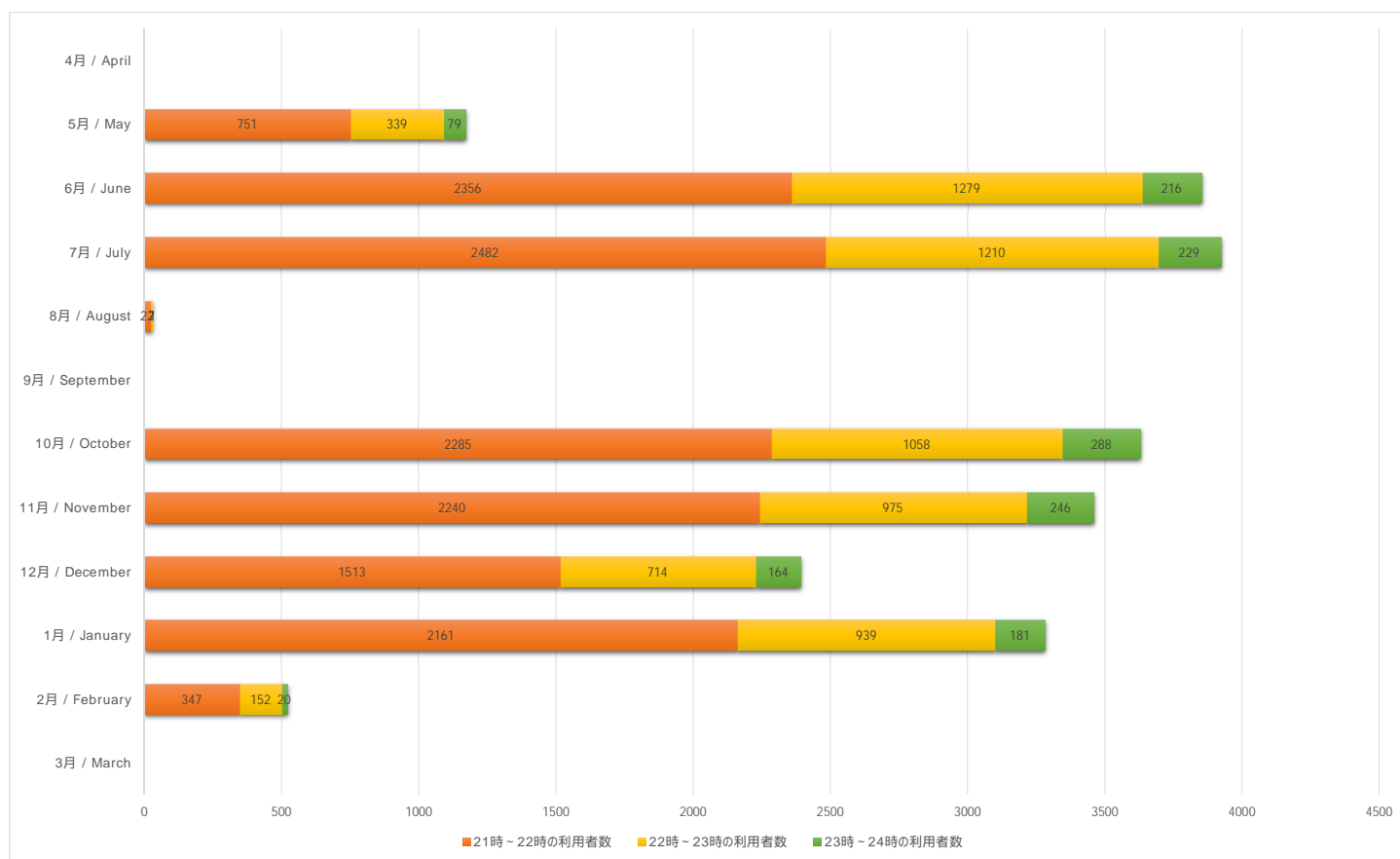
(26)学部生 3回生以上ゼミ履修者・未履修者の月別平均滞留時間 Average time in library per month seminar and non-seminar students, 3rd year and above.



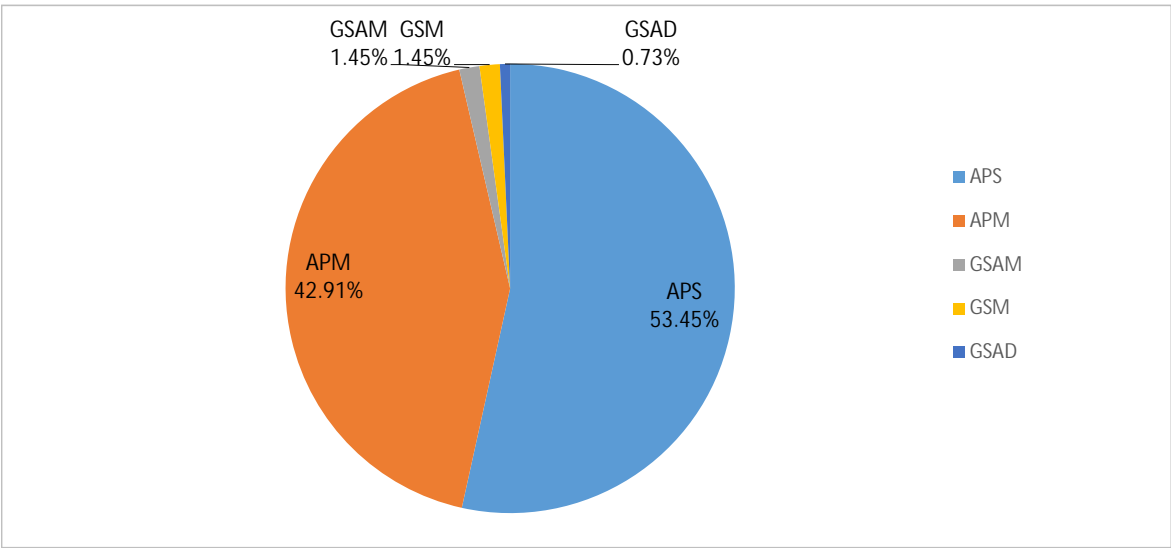
(27)学部生・院生 成績（G P A）と平均滞留時間比較 Undergraduate / Graduate students average time in library by GPA.



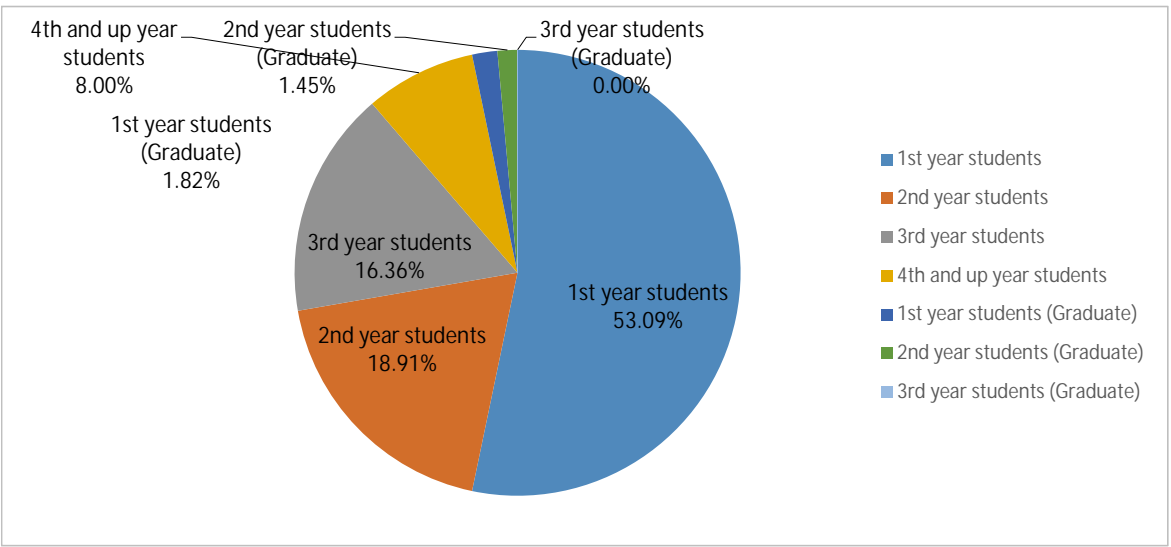
(28)21～22時、22～23時、23～24時の月別滞留者数比較 Average month library usage: 21:00-22:00, 22:00-23:00, 23:00-24:00



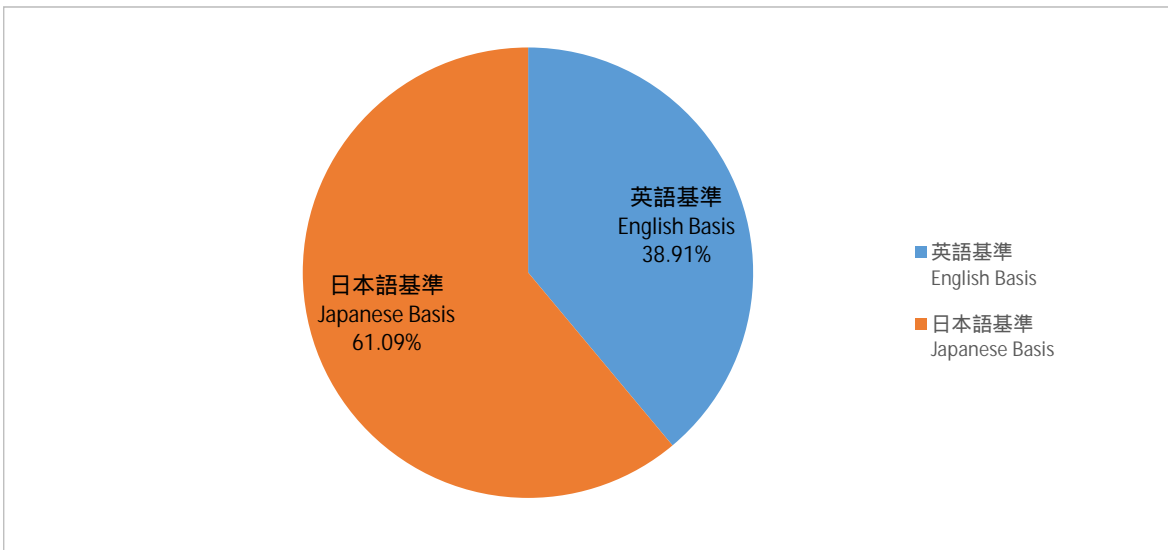
Part1-Q1 : あなたの『学部』を教えてください。
Please select your College.



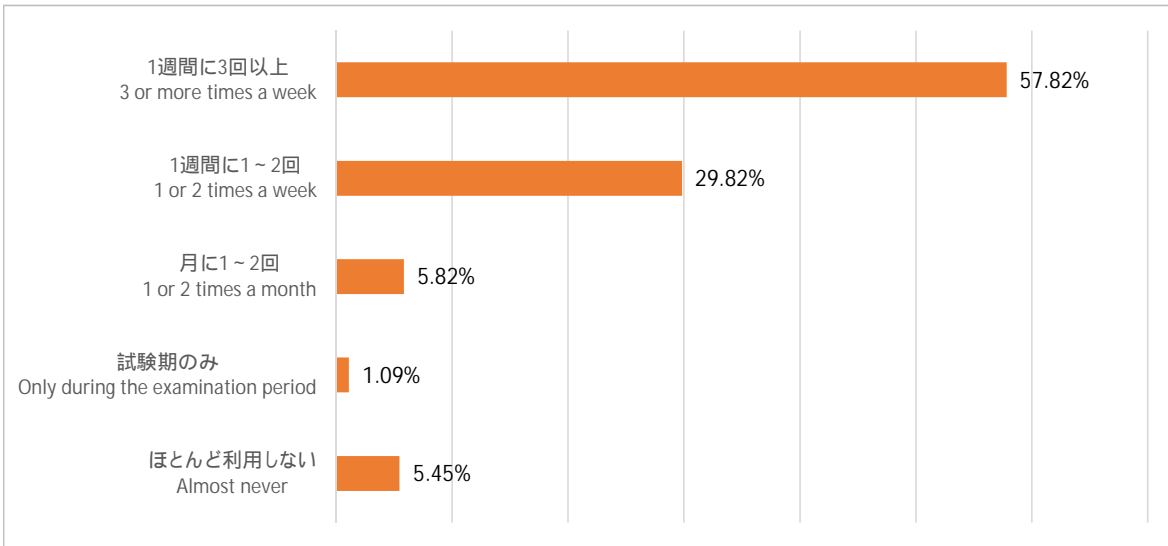
Part1-Q2 : あなたの『回生』を教えてください。
Please select your 'Year Level'



Part1-Q3 : あなたの「言語基準」を教えてください。
Please select your Language-Basis

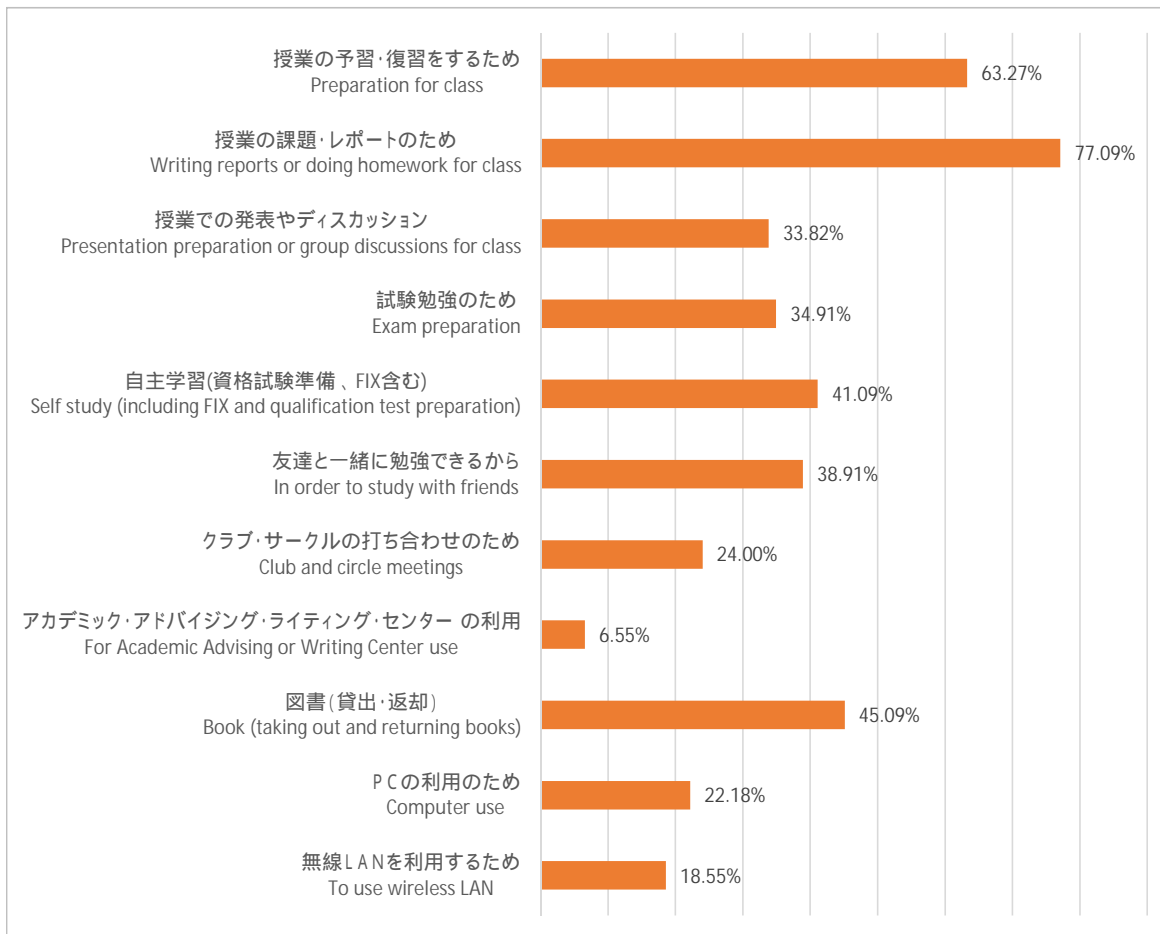


Part2-Q1 : ライブラリーの利用頻度を教えてください。
How often do you use the Library?



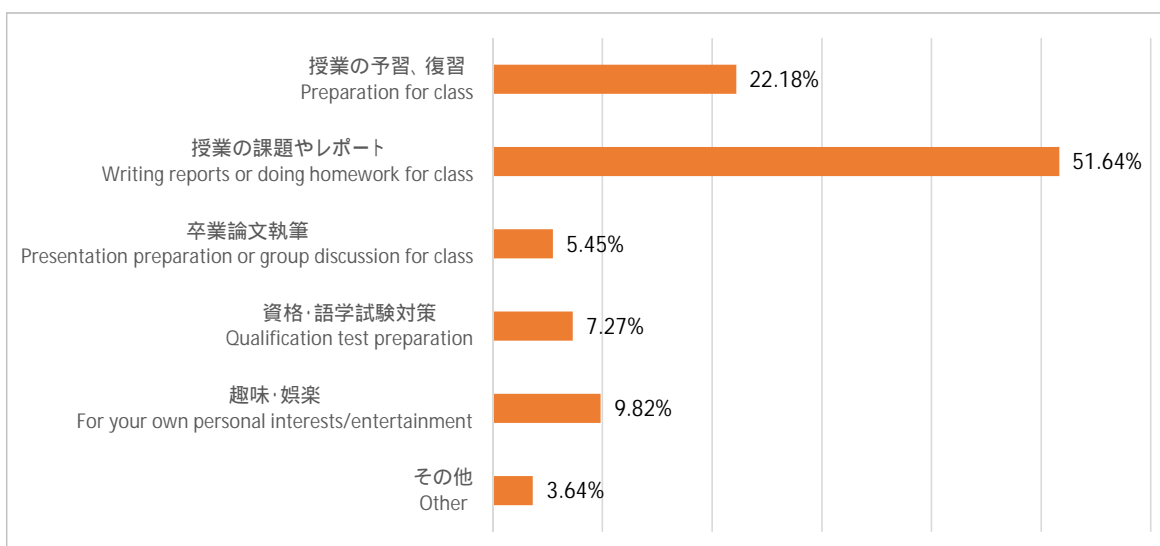
Part2-Q2 : ライブラリーを利用する目的は何ですか？

Why do you use the Library?



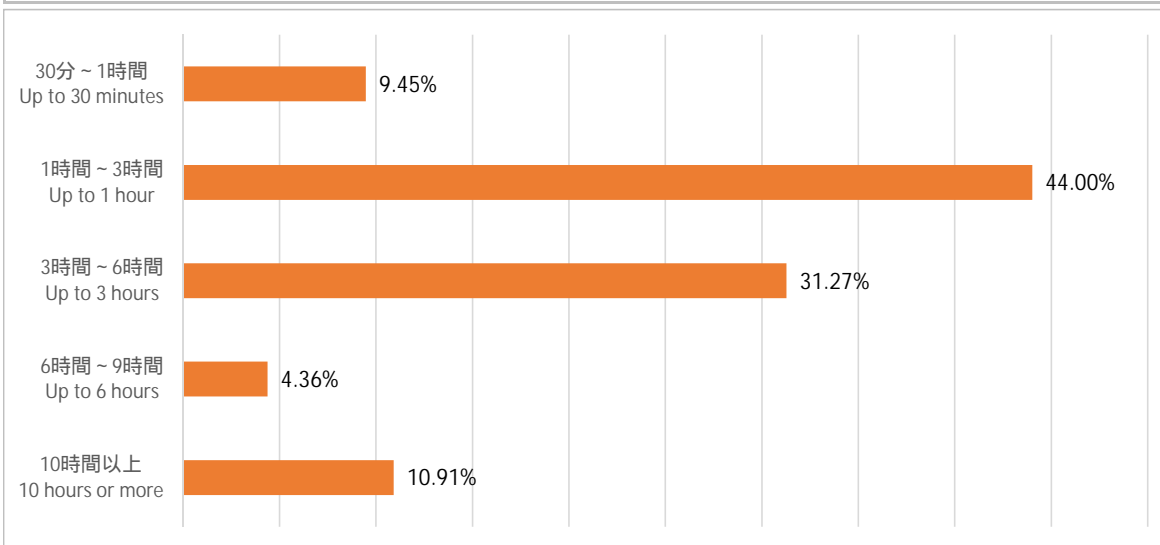
Part2-Q3 : ライブラリーの資料を使う主な目的を次の中から選んでください。

What do you mainly use the Library resources for?



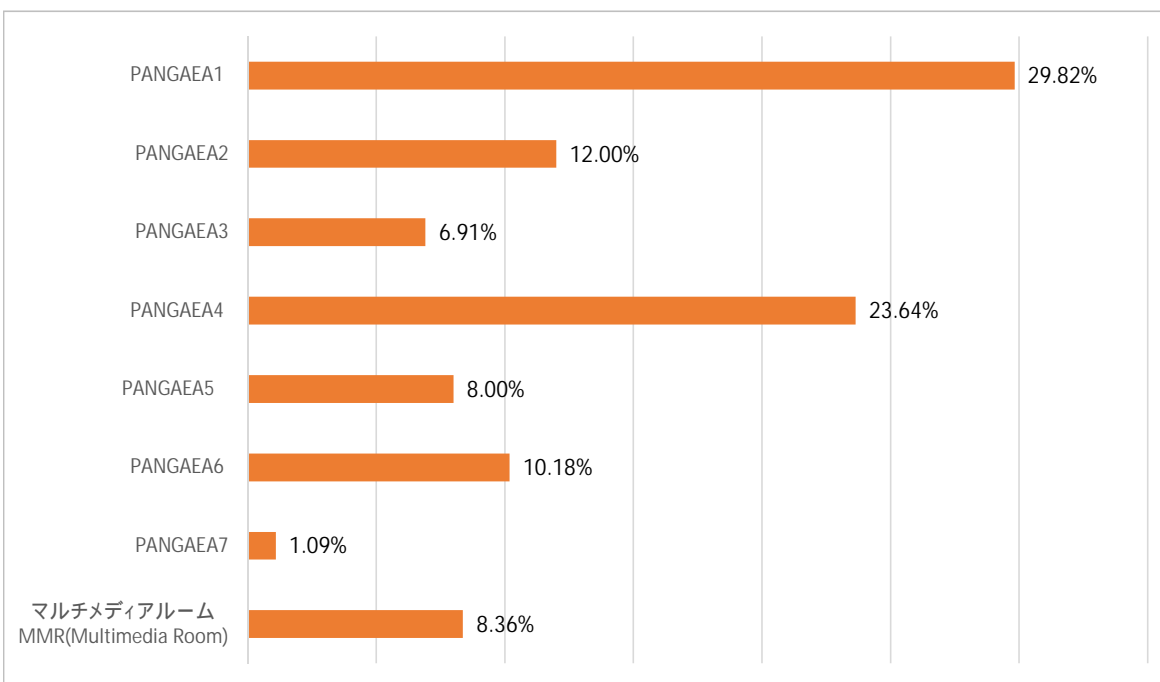
Part2-Q4 : 開講期間におけるライブラリーでの1週間の平均滞在時間はどのくらいですか？

On average, how long do you usually spend in the Library during the week when classes are in session?



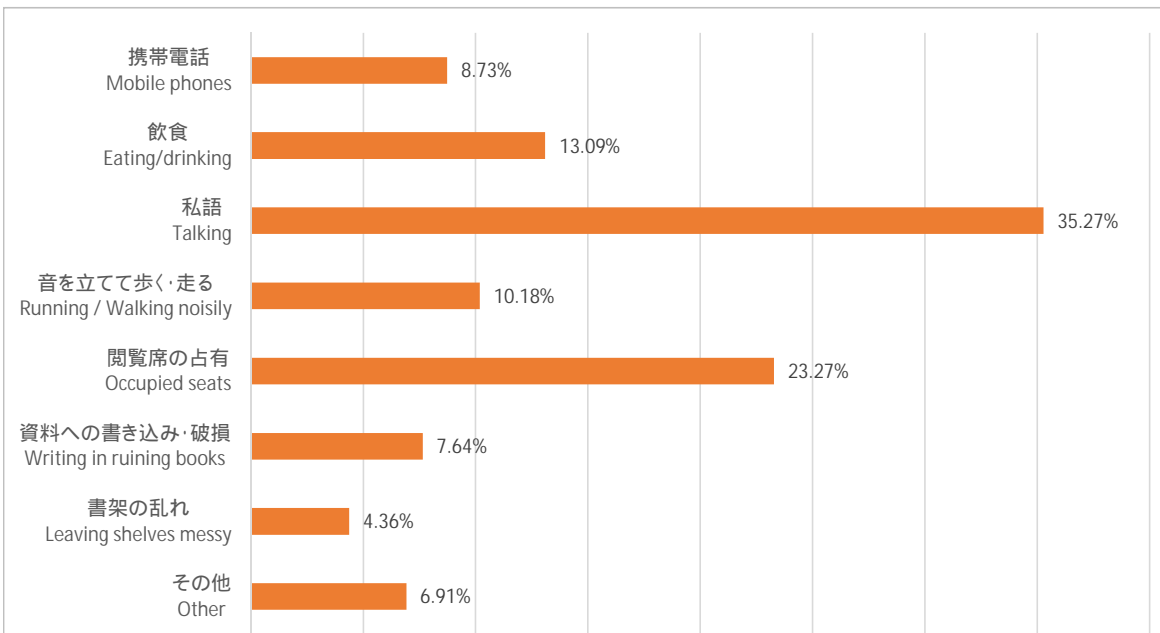
Part2-Q5 : ライブラリーで1番よく利用するエリアはどこですか？

Which area of the Library do you use the most?



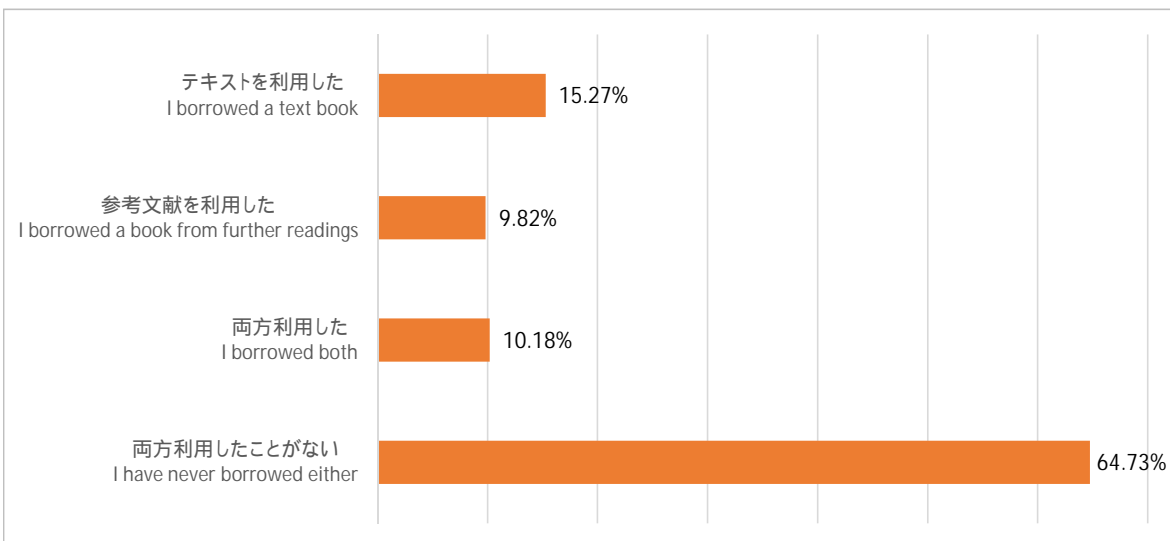
Part2-Q6：利用者のマナーについて気になることがありますか？

Do you have any concerns about the manners of other library users?

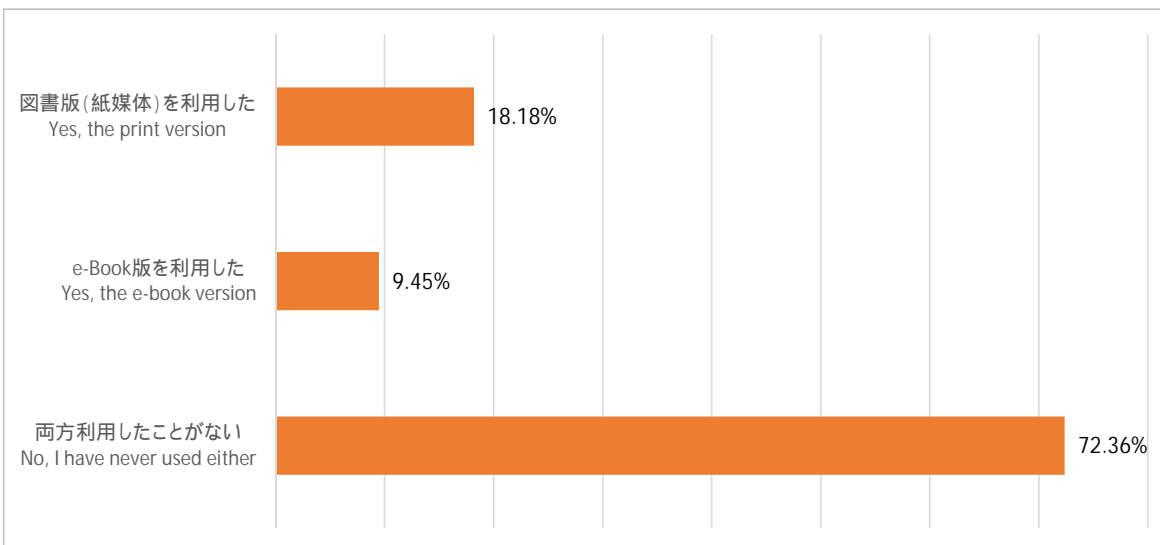


Part2-Q7：ライブラリー1階のリザーブ・コーナー（テキスト・参考文献）の図書を利用したことはありますか。

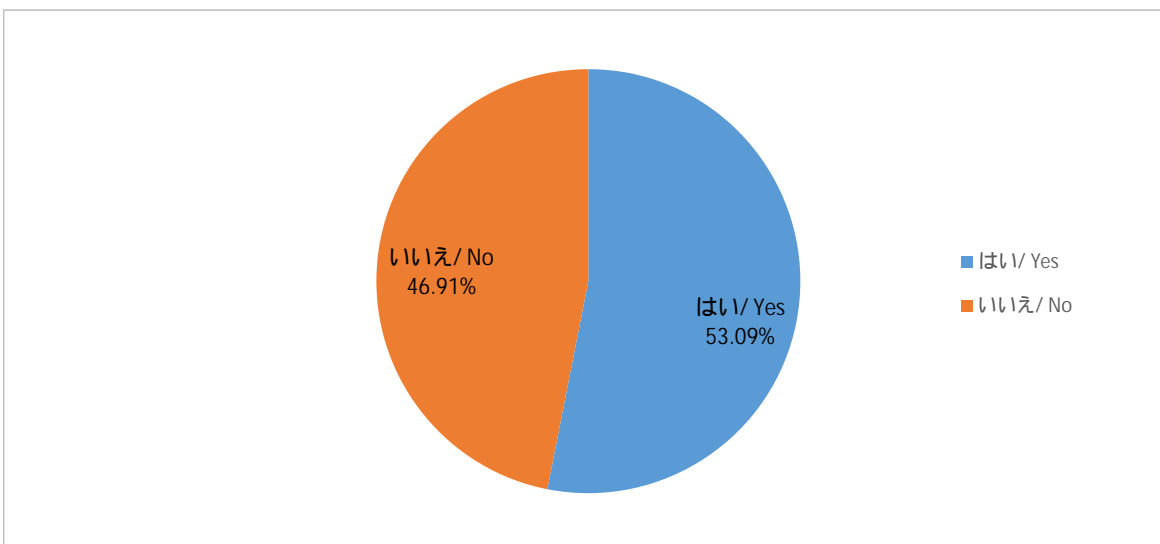
Have you ever used a book from the Reserve Corner (i.e., Required Reading or Further Reading)?



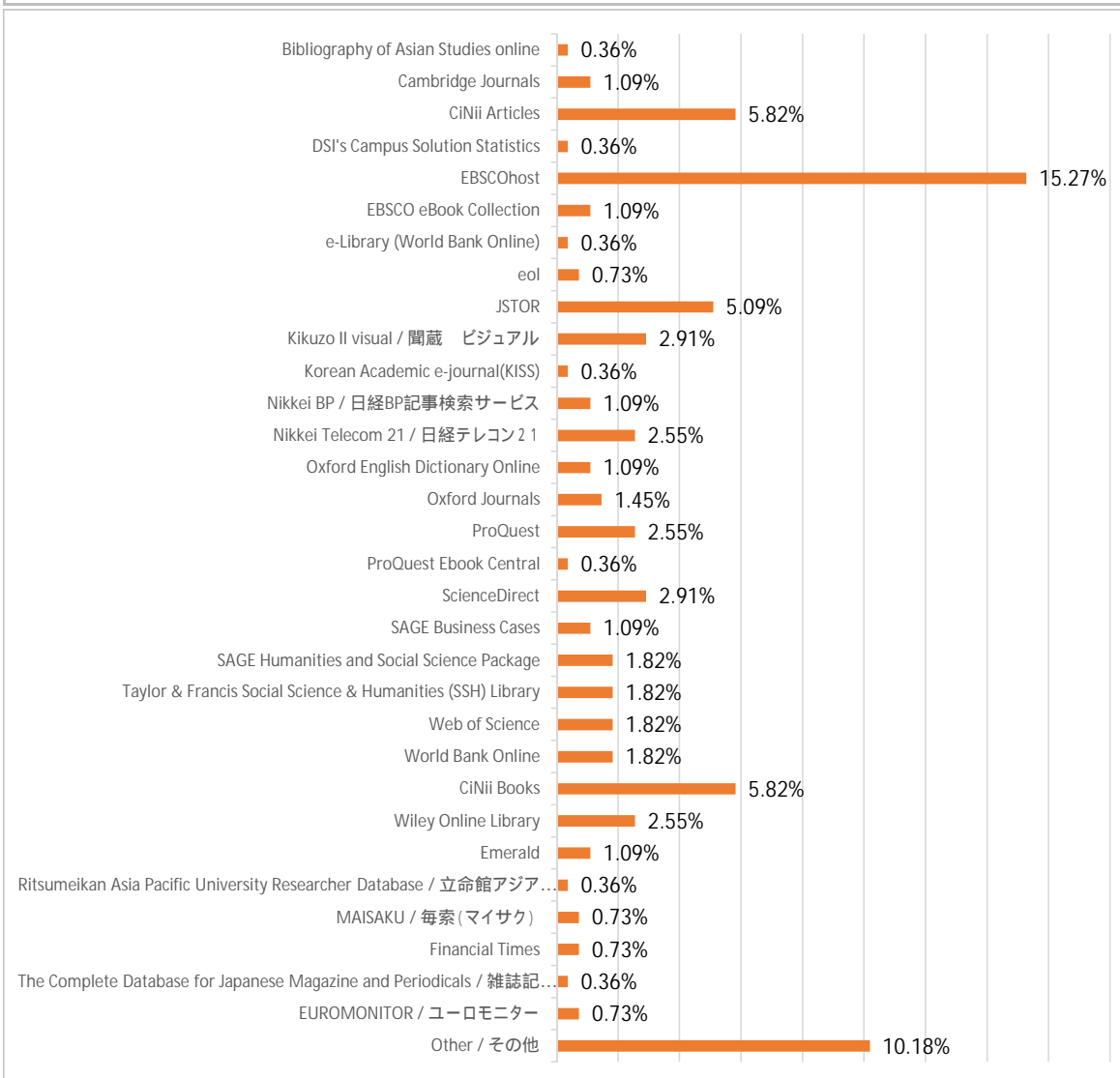
Part2-Q8 : APUライブラリーでは、シラバスに指定された参考文献等については、e-Book版も購入し提供しています。授業で指定された参考文献の利用についてお聞きします。 e-Bookの有無は、各講義シラバスの画面にて案内されています。 This is question regarding Further Readings. The APU Library now offers e-book versions of the Further Readings listed in the syllabus. Each syllabus indicates whether an e-book is available for the Further Readings. Have you ever used Further Readings?



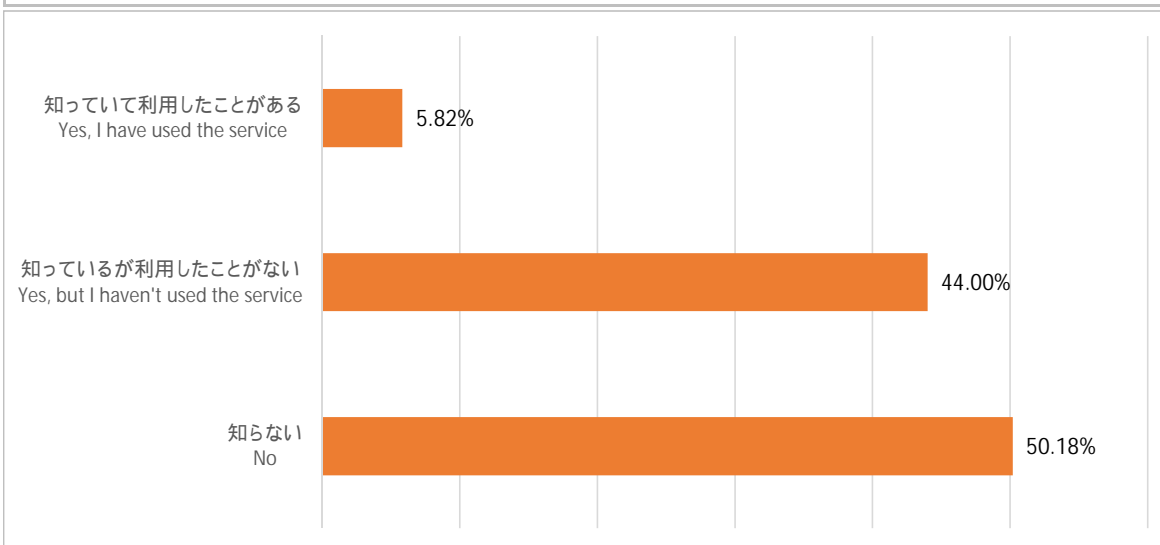
Part2-Q9 : 授業中、担当教員から講義内容に関する具体的な資料や参考文献を読むようといった指示や案内はありましたか? Have you ever been told by your instructor in class to read detailed materials or further readings related to the class content?



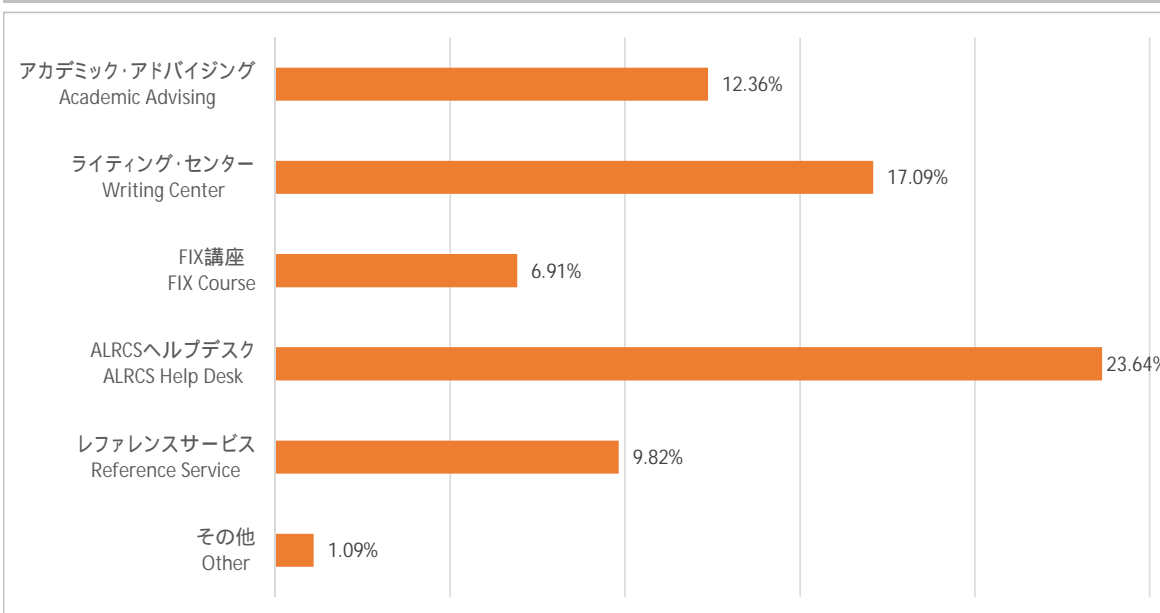
Part2-Q10 : 利用したことのあるデータベースを教えてください。
Please list the databases that you have used.



Part2-Q11：大分県立図書館の資料をAPUへ取り寄せる借りることができるサービスについてお聞きします。
 Did you know you can borrow books from the Oita Prefectural Library via inter-library loan?



Part3-Q1：これまで利用したことがあるものを教えてください。*レファレンスサービスとは資料の探し方、調べ方、取寄せ方など利用者の手助けを行う対人サービスのことです。
 Please check the services you have used from among those listed. *Reference Service refers to support provided directly by library staff about how to find or request materials.



Part3-Q2 : 授業以外の学習で、最も利用する場所はどこですか。
Where do you study outside of class the most?

